



William D. Manns, Place 1  
Yolanda Daniels, Place 2  
Brandon Drayden, Place 3  
James D. Sulcer, Place 4  
Karen S. Mazerac, Place 5  
Vacant, Alternate No. 1  
Neal Edwards, Alternate No. 2

---

## Board of Adjustment Called Special Session

Tuesday, November 23, 2021 at 6:30 PM

Manor City Hall, Council Chambers, 105 E. Eggleston St.

---

### AGENDA

#### CALL TO ORDER AND ANNOUNCE A QUORUM IS PRESENT

#### PUBLIC COMMENTS

*Comments will be taken from the audience on non-agenda related topics for a length of time, not to exceed three (3) minutes per person. Comments on specific agenda items must be made when the item comes before the Board. To address the Board of Adjustments, please complete the white card and present it to city staff prior to the meeting. **No Action May be Taken by the Board of Adjustments During Public Comments.***

#### PUBLIC HEARINGS

- 1. Consideration, discussion, and possible action on a variance request from Manor Code of Ordinances, Chapter 15, Article 15.02. Section 15.02.005(a) Queuing Requirements and located on Lot 7B, Block A, Manor Commons SW Commercial, Manor, TX to permit vehicle queuing within a fire lane.**

#### CONSENT AGENDA

*All of the following items on the Consent Agenda are considered to be self-explanatory by the Council and will be enacted with one motion. There will be no separate discussion of these items unless requested by the Chair or a Board Member; in which event, the item will be removed from the consent agenda and considered separately.*

- 2. Consideration, discussion, and possible action to approve the Board of Adjustment Minutes for the October 27, 2021, Regular Session.**

#### REGULAR AGENDA

- 3. Consideration, discussion, and possible action on appointing a Chairperson for the Board of Adjustment.**
- 4. Consideration, discussion, and possible action on a variance request from Manor Code of Ordinances, Chapter 15, Article 15.02. Section 15.02.005(a) Queuing Requirements and located on Lot 7B, Block A, Manor Commons SW Commercial, Manor, TX to permit vehicle queuing within a fire lane.**

## ADJOURNMENT

In addition to any executive session already listed above, the City Council reserves the right to adjourn into executive session at any time during the course of this meeting to discuss any of the matters listed above, as authorized by Texas Government Code Section §551.071 (Consultation with Attorney), §551.072 (Deliberations regarding Real Property), §551.073 (Deliberations regarding Gifts and Donations), §551.074 (Personnel Matters), §551.076 (Deliberations regarding Security Devices) and §551.087 (Deliberations regarding Economic Development Negotiations).

## CONFLICT OF INTEREST

*In accordance with Section 12.04 (Conflict of Interest) of the City Charter, "No elected or appointed officer or employee of the city shall participate in the deliberation or decision on any issue, subject or matter before the council or any board or commission, if the officer or employee has a personal financial or property interest, direct or indirect, in the issue, subject or matter that is different from that of the public at large. An interest arising from job duties, compensation or benefits payable by the city shall not constitute a personal financial interest."*

*Further, in accordance with Chapter 171, Texas Local Government Code (Chapter 171), no City Council member and no City officer may vote or participate in discussion of a matter involving a business entity or real property in which the City Council member or City officer has a substantial interest (as defined by Chapter 171) and action on the matter will have a special economic effect on the business entity or real property that is distinguishable from the effect on the general public. An affidavit disclosing the conflict of interest must be filled out and filed with the City Secretary before the matter is discussed.*

## POSTING CERTIFICATION

I, the undersigned authority do hereby certify that this Notice of Meeting was posted on the bulletin board, at the City Hall of the City of Manor, Texas, a place convenient and readily accessible to the general public at all times and said Notice was posted on the following date and time: **Friday, November 19, 2021, by 5:00 PM** and remained so posted continuously for at least 72 hours preceding the scheduled time of said meeting.

---

/s/ Lluvia T. Almaraz, TRMC  
City Secretary for the City of Manor, Texas

## NOTICE OF ASSISTANCE AT PUBLIC MEETINGS:

The City of Manor is committed to compliance with the Americans with Disabilities Act. Manor City Hall and the Council Chambers are wheelchair accessible and accessible parking spaces are available. Requests for accommodations or interpretive services must be made 48 hours prior to this meeting. Please contact the City Secretary at 512.272.5555 or e-mail [lalmaraz@cityofmanor.org](mailto:lalmaraz@cityofmanor.org).



## AGENDA ITEM SUMMARY FORM

**PROPOSED MEETING DATE:** November 23, 2021  
**PREPARED BY:** Scott Dunlop, Interim City Manager  
**DEPARTMENT:** Administration

### AGENDA ITEM DESCRIPTION:

Consideration, discussion, and possible action on a variance request from Manor Code of Ordinances, Chapter 15, Article 15.02. Section 15.02.005(a) Queuing Requirements and located on Lot 7B, Block A, Manor Commons SW Commercial, Manor, TX to permit vehicle queuing within a fire lane.

### BACKGROUND/SUMMARY:

A bank with an associated ATM drive through is being proposed for the lot next to (east side) of Whataburger. They are required to carry the 26' fire lane around their site to provide connectivity to the fire lanes on the north and south ends of the development. Additionally, due to the N. FM 973 ROW the lot narrows in the rear and there is an area of floodplain along the eastern edge of the property that requires a retaining wall. The floodplain, retaining wall, and narrowing of the property due to the 973 alignment push the required fire lane further into the property which diminishes the developable area and has caused the slight encroachment into the fire lane.

**LEGAL REVIEW:** NO  
**FISCAL IMPACT:** NO  
**PRESENTATION:** NO  
**ATTACHMENTS:** YES

- Letter of Intent
- Queuing Diagrams
- ESD 12 AMOC Fire Lane Approval

### STAFF RECOMMENDATION:

It is the City Staff's recommendation that the Board of Adjustment conduct a public hearing on a variance request from Manor Code of Ordinances, Chapter 15, Article 15.02. Section 15.02.005(a) Queuing Requirements and located on Lot 7B, Block A, Manor Commons SW Commercial, Manor, TX to permit vehicle queuing within a fire lane.

**PLANNING & ZONING COMMISSION:**      **Recommend Approval**      **Disapproval**      **None**



6000 Lombardo Blvd  
Suite 500  
Cleveland, OH 44131

November 1, 2021

Mr. Scott Dunlop, AICP  
Interim City Manager  
Development Services Director  
City of Manor Texas – City Hall  
Manor, TX 78653

Re: Bank of America – Manor Commons  
SWC Hwy 290 & FM 973  
Job No: 20.0003779.000

Dear Scott:

This letter is to ask for your consideration in granting a Planning & Zoning variance, specifically a variance regarding the Manor, Texas Code of Ordinances 09/10/21 Supplement 4, Section 15.02.005 – Queuing requirements. This variance request is only for the proposed future drive-up ATM location. The Day-One ATM location – which will be installed as part of the Bank's primary scope of work and will be available to the public once the Bank's construction is complete – meets the City's queuing requirements and does not require a variance. Diagrams have been uploaded to illustrate the 2 separate ATMs and their queuing.

We request this variance due to the nature of the property tapering to approximately 100', the need for a retaining wall along the east property line and the necessity of providing fire department access around the building. Because of these constraints, our site does not leave sufficient room for the City's minimum 3-car queuing line at the proposed future drive-up ATM without encroaching into the 26-foot wide Fire Lane. We request a variance to allow for a 2-car queuing line at the proposed future drive-up ATM to avoid encroachment into the Fire Lane or allow a third car to encroach into the Fire Lane by 2'-6" for approximately half a car length. If the variance is not granted, the Bank will have its drive-up ATM capacity limited to one ATM. The Bank prefers to have the option to add a second ATM in the future as part of their overall site development strategy. This variance request applies only to the future ATM - the site plan as submitted meets the City's requirement for 3 car queuing at the "day-one" ATM to be installed under the current scope of work.

As a result of the site constraints mentioned above, we have requested and have been granted an Alternate Method of Compliance (AMOC) for Fire Lane turning radii by the Travis County Emergency Services District No. 12, Fire Prevention Office.

November 1, 2021  
Scott Dunlap - City of Manor, TX  
Page 2

Kind Regards,

Robert J Sullivan Jr.

Digitally signed by Robert J Sullivan Jr.  
DN: C=US,  
E=rsullivan@nelsononline.com,  
O=Nelson, CN=Robert J Sullivan Jr.  
Date: 2021.11.01 12:11:27-04'00'

Robert J Sullivan, Jr. RA, NCARB  
Senior Architect, Manager

U:\Proj\Bank of America\TX\20.0003779.000-BofA Manor Commons FC 2.0 TX9-377\PROJECT RESOURCES\CODE DATA\AMOC -  
variance\Variance\letter of Intent.docx/rjs



Description:	No:	Date:
Issued for Schematic Design		3/26/2021
Issued for COE Package		07/30/2021
Issued for CD Review		09/10/2021
Issued for Pricing and Permit		10/13/2021



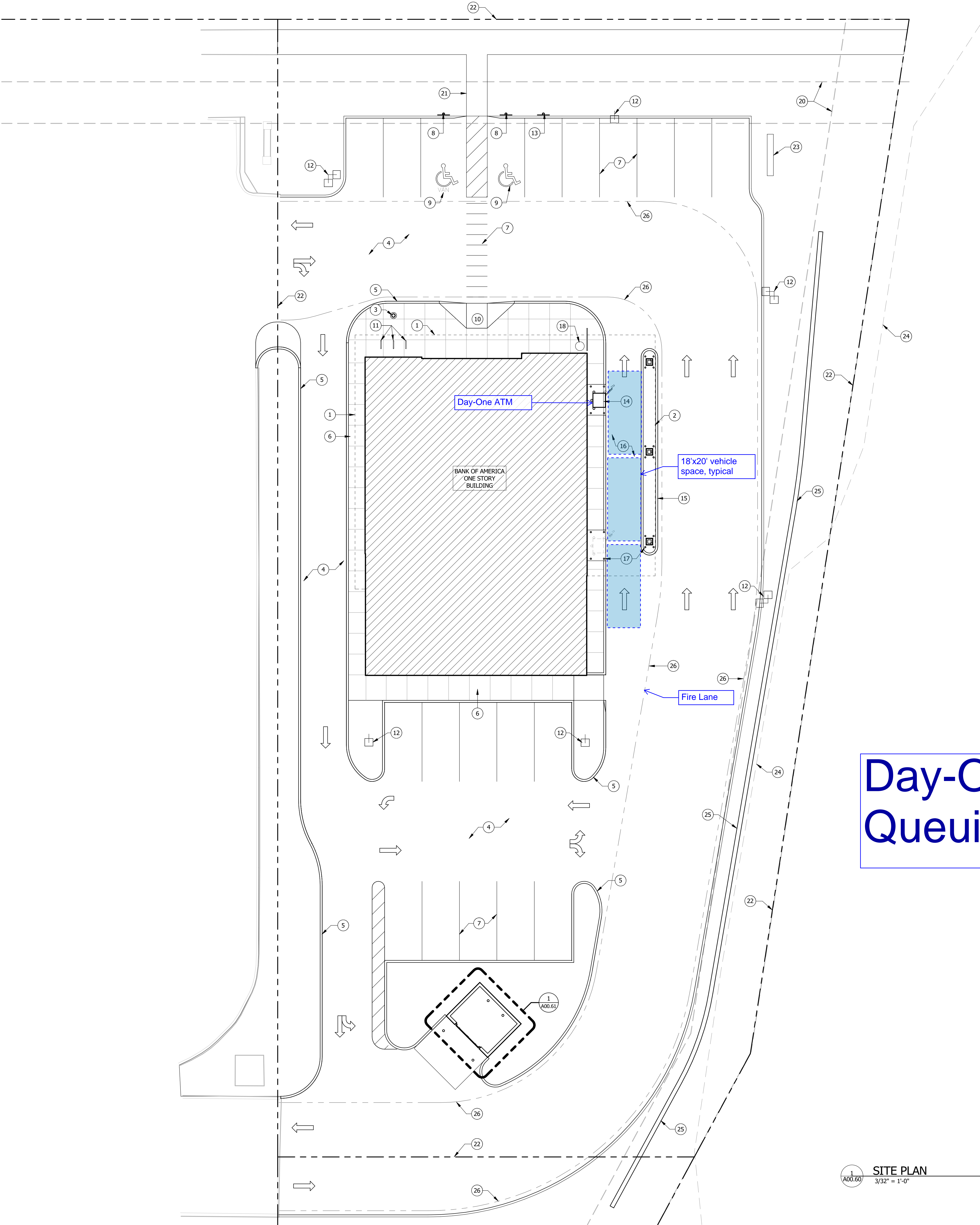
**SITE GENERAL NOTES:**

- A. ALL SIDEWALK AND EGRESS ROUTE SLOPE TO BE 2% MAX (1.5% RECOMMENDED).
- B. ALL WALKWAY CAULKING TO BE GREY.
- C. 2% MAX SLOPE (CROSS & PATH ACROSS DRIVE IS 4.56%) AT DOOR MANEUVERING CLEARANCE 1.5%.
- D. SEE CIVIL DRAWINGS FOR MORE INFORMATION.
- E. SITE SIGNAGE BY BANK VENDOR. SEE SIGNAGE PACKAGE FOR SITE DIRECTIONAL AND/OR MONUMENT/PYLON SIGN.
- F. COORDINATE SITE LIGHTING WITH CIVIL & ELECTRICAL DRAWINGS.
- G. COORDINATE WITH LANDSCAPE DRAWINGS FOR LAYOUT.

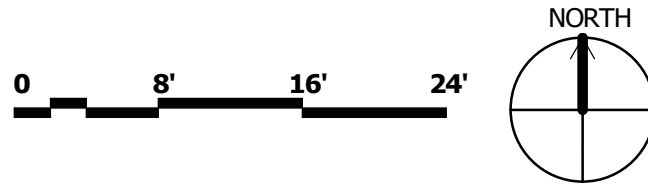
**SITE KEYNOTES:**

- 1. BUILDING CANOPY ABOVE.
- 2. DRIVE-THRU CANOPY ABOVE.
- 3. FLAGPOLE, SEE SHEET A09.30 FOR DETAILS. PROVIDE POWER AS REQUIRED FOR LIGHT.
- 4. ASPHALT PAVING PER DOT SPEC. SEE CIVIL DRAWINGS FOR MORE INFORMATION.
- 5. CURB, TYP. SEE CIVIL DRAWINGS FOR MORE INFORMATION.
- 6. CONCRETE SIDEWALK. SEE CIVIL DRAWINGS FOR MORE INFORMATION.
- 7. STRIPING. SEE CIVIL DRAWINGS FOR MORE INFORMATION.
- 8. PARKING SIGN: PER BANK OF AMERICA SIGNAGE AND ADA GUIDELINES. SEE A09.30 AND CIVIL DRAWINGS FOR MORE INFORMATION.
- 9. INTERNATIONAL SYMBOL OF ACCESSIBILITY. SEE CIVIL DRAWINGS.
- 10. ADA RAMP PER IBC AND ANSI. MAINTAIN CLEARANCE AT ENTRY DOOR AS REQUIRED PER CODE AND AS SHOWN. SEE CIVIL DRAWINGS FOR MORE INFORMATION.
- 11. "INVERTED-U" BIKE RACKS. COORDINATE FINAL LOCATION WITH OWNER.
- 12. NEW SITE LIGHT POLE. SEE CIVIL & ELECTRICAL DRAWINGS FOR MORE INFORMATION.
- 13. PARKING SIGN: "LOW EMITTING VEHICLES SIGN" PER BANK SIGNAGE AND LEED REQUIREMENTS. SIGN PROVIDED BY BANK SIGNAGE VENDOR. GC TO COORDINATE WITH SIGN VENDOR FOR INSTALLATION REQUIREMENTS.
- 14. DRIVE UP ATM. SEE A03.01 & A08.12 FOR MORE INFORMATION.
- 15. CONCRETE DIVIDER ISLAND.
- 16. PROVIDE CONCRETE DRIVE LANE UNDER CANOPY AT DRIVE-THRU. SEE CIVIL DRAWINGS.
- 17. PROVIDE BOLLARDS AS INDICATED, SEE A08.12 FOR ADDITIONAL INFORMATION.
- 18. TRASH RECEPTACLE PER SPEC. INSTALL PER MANUFACTURERS RECOMMENDATION.
- 19. DIRECTIONAL SIGNAGE. SEE CIVIL DRAWINGS FOR MORE INFORMATION.
- 20. UTILITY EASEMENT. SEE CIVIL DRAWINGS FOR MORE INFORMATION.
- 21. SIDEWALK CONNECTION TO PUBLIC WAY. SEE CIVIL DRAWINGS.
- 22. PROPERTY LINE. SEE CIVIL DRAWINGS FOR METES AND BOUNDS.
- 23. NEW MONUMENT/PYLON SIGN. SEE ELECTRICAL AND SIGN VENDOR DRAWINGS FOR ADDITIONAL INFORMATION.
- 24. LINE OF 100 YEAR FLOODPLAIN.
- 25. RETAINING WALL. SEE CIVIL DRAWINGS FOR MORE INFORMATION.
- 26. LINE INDICATES FIRE LANE. SEE CIVIL DRAWINGS FOR MORE INFORMATION.

Day-One ATM  
Queuing Diagram



1 SITE PLAN  
A00.60  
3/32" = 1'-0"





**Client Representative:**Jones Lang LaSalle  
Attn: Amy Clark  
Tel: 214.709.9783  
Email: amy.clark@am.jll.com**Architect:**Attn: Rob Sullivan, Project Manager  
Tel: 216.830.1561  
Email: rsullivan@nelsonww.comArchitect of Record  
Attn: Vincent Duet, Technical Leader  
Tel: 215.825.6620  
Email: vduet@nelsonww.com**Civil:**LANGAN | Adams  
Attn: Ben Henry  
T: 817.328.3217  
E: bhenry@langan.com**Structural:**Urban Structure  
Attn: Jeff Reed, P.E., S.E.  
T: 214.295.5775  
E: jreed@urbanstruct.com**MEP:**Windward  
Attn: Charles Culbertson  
T: 972.934.6440  
E: charles.culbertson@windwardec.com

Description:	No:	Date:
Issued for Schematic Design		3/26/2021
Issued for COE Package		07/30/2021
Issued for CD Review		09/10/2021
Issued for Pricing and Permit		10/13/2021

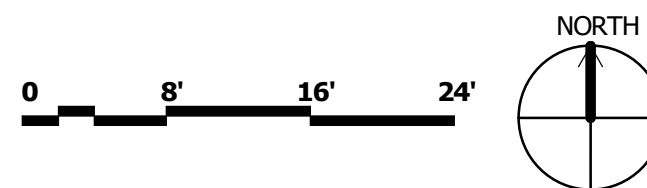
**SITE GENERAL NOTES:**

- ALL SIDEWALK AND EGRESS ROUTE SLOPE TO BE 2% MAX (1.5% RECOMMENDED).
- ALL WALKWAY CAULKING TO BE GREY.
- 2% MAX SLOPE (CROSS & PATH ACROSS DRIVE IS 4.56%) AT DOOR MANEUVERING CLEARANCE 1.5%.
- SEE CIVIL DRAWINGS FOR MORE INFORMATION.
- SITE SIGNAGE BY BANK VENDOR. SEE SIGNAGE PACKAGE FOR SITE DIRECTIONAL AND/OR MONUMENT/PYLON SIGN.
- COORDINATE SITE LIGHTING WITH CIVIL & ELECTRICAL DRAWINGS.
- COORDINATE WITH LANDSCAPE DRAWINGS FOR LAYOUT.

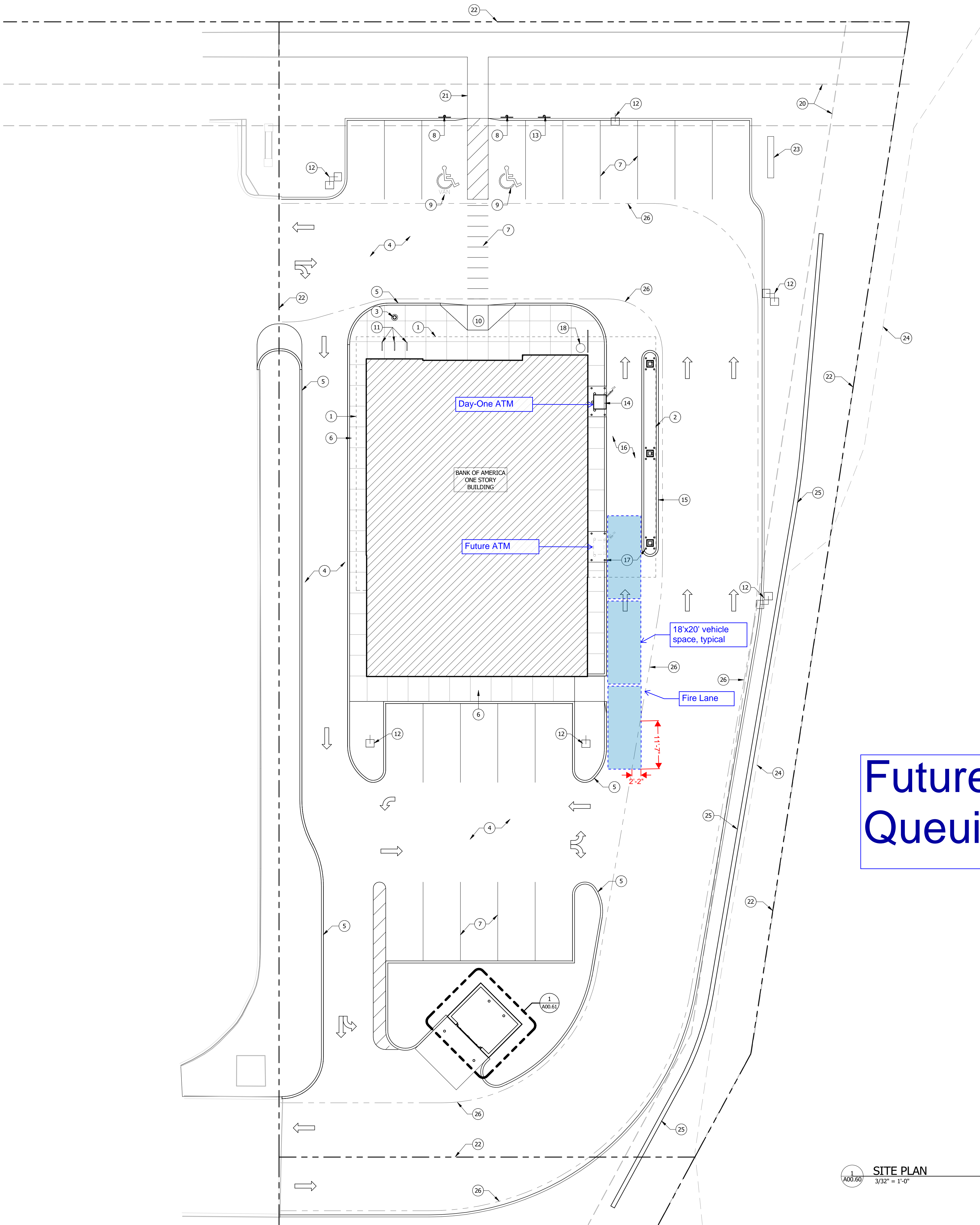
**SITE KEYNOTES:**

- BUILDING CANOPY ABOVE.
- DRIVE-THRU CANOPY ABOVE.
- FLAGPOLE, SEE SHEET A09.30 FOR DETAILS. PROVIDE POWER AS REQUIRED FOR LIGHT.
- ASPHALT PAVING PER DOT SPEC. SEE CIVIL DRAWINGS FOR MORE INFORMATION.
- CURB, TYP. SEE CIVIL DRAWINGS FOR MORE INFORMATION.
- CONCRETE SIDEWALK. SEE CIVIL DRAWINGS FOR MORE INFORMATION.
- STRIPING. SEE CIVIL DRAWINGS FOR MORE INFORMATION.
- PARKING SIGN: PER BANK OF AMERICA SIGNAGE AND ADA GUIDELINES. SEE A09.30 AND CIVIL DRAWINGS FOR MORE INFORMATION.
- INTERNATIONAL SYMBOL OF ACCESSIBILITY. SEE CIVIL DRAWINGS.
- ADA RAMP PER IBC AND ANSI. MAINTAIN CLEARANCE AT ENTRY DOOR AS REQUIRED PER CODE AND AS SHOWN. SEE CIVIL DRAWINGS FOR MORE INFORMATION.
- "INVERTED-U" BIKE RACKS. COORDINATE FINAL LOCATION WITH OWNER.
- NEW SITE LIGHT POLE. SEE CIVIL & ELECTRICAL DRAWINGS FOR MORE INFORMATION.
- PARKING SIGN: "LOW EMITTING VEHICLES SIGN" PER BANK SIGNAGE AND LEED REQUIREMENTS. SIGN PROVIDED BY BANK SIGNAGE VENDOR. GC TO COORDINATE WITH SIGN VENDOR FOR INSTALLATION REQUIREMENTS.
- DRIVE UP ATM. SEE A03.01 & A08.12 FOR MORE INFORMATION.
- CONCRETE DIVIDER ISLAND.
- PROVIDE CONCRETE DRIVE LANE UNDER CANOPY AT DRIVE-THRU. SEE CIVIL DRAWINGS.
- PROVIDE BOLLARDS AS INDICATED, SEE A08.12 FOR ADDITIONAL INFORMATION.
- TRASH RECEPTACLE PER SPEC. INSTALL PER MANUFACTURERS RECOMMENDATION.
- DIRECTIONAL SIGNAGE. SEE CIVIL DRAWINGS FOR MORE INFORMATION.
- UTILITY EASEMENT. SEE CIVIL DRAWINGS FOR MORE INFORMATION.
- SIDEWALK CONNECTION TO PUBLIC WAY. SEE CIVIL DRAWINGS.
- PROPERTY LINE. SEE CIVIL DRAWINGS FOR METES AND BOUNDS.
- NEW MONUMENT/PYLON SIGN. SEE ELECTRICAL AND SIGN VENDOR DRAWINGS FOR ADDITIONAL INFORMATION.
- LINE OF 100 YEAR FLOODPLAIN.
- RETAINING WALL. SEE CIVIL DRAWINGS FOR MORE INFORMATION.
- LINE INDICATES FIRE LANE. SEE CIVIL DRAWINGS FOR MORE INFORMATION.

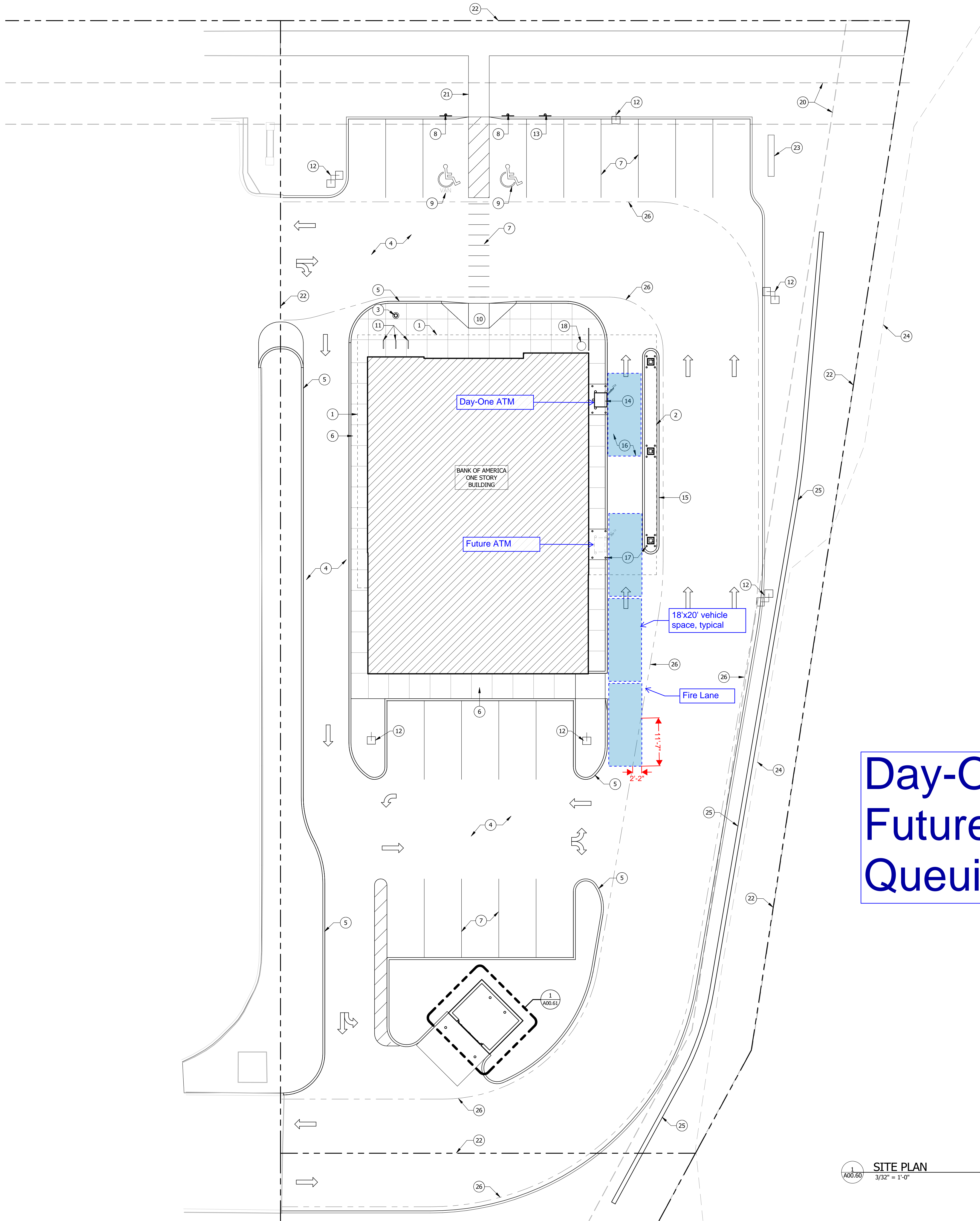
# Future ATM Queuing Diagram

**SITE PLAN**  
3/32" = 1'-0"**BANK OF AMERICA**  
Manor Commons11828 Ring Dr.  
Manor, TX 78653-2105PROPERTY ID: TX9-377  
NSRP VERSION: 2.0  
BULLETIN: 2-2021**ARCHITECTURAL SITE  
PLAN**

Project No: 20.0003779.000 Reviewed By: AW

**A00.60**





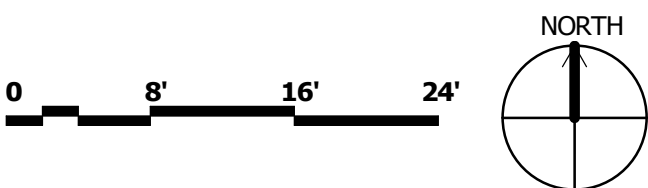
**SITE GENERAL NOTES:**

- A. ALL SIDEWALK AND EGRESS ROUTE SLOPE TO BE 2% MAX (1.5% RECOMMENDED).
- B. ALL WALKWAY CAULKING TO BE GREY.
- C. 2% MAX SLOPE (CROSS & PATH ACROSS DRIVE IS 4.56%) AT DOOR MANEUVERING CLEARANCE 1.5%.
- D. SEE CIVIL DRAWINGS FOR MORE INFORMATION.
- E. SITE SIGNAGE BY BANK VENDOR. SEE SIGNAGE PACKAGE FOR SITE DIRECTIONAL AND/OR MONUMENT/PYLON SIGN.
- F. COORDINATE SITE LIGHTING WITH CIVIL & ELECTRICAL DRAWINGS.
- G. COORDINATE WITH LANDSCAPE DRAWINGS FOR LAYOUT.

**SITE KEYNOTES:**

- 1. BUILDING CANOPY ABOVE.
- 2. DRIVE-THRU CANOPY ABOVE.
- 3. FLAGPOLE, SEE SHEET A09.30 FOR DETAILS. PROVIDE POWER AS REQUIRED FOR LIGHT.
- 4. ASPHALT PAVING PER DOT SPEC. SEE CIVIL DRAWINGS FOR MORE INFORMATION.
- 5. CURB, TYP. SEE CIVIL DRAWINGS FOR MORE INFORMATION.
- 6. CONCRETE SIDEWALK. SEE CIVIL DRAWINGS FOR MORE INFORMATION.
- 7. STRIPING. SEE CIVIL DRAWINGS FOR MORE INFORMATION.
- 8. PARKING SIGN: PER BANK OF AMERICA SIGNAGE AND ADA GUIDELINES. SEE A09.30 AND CIVIL DRAWINGS FOR MORE INFORMATION.
- 9. INTERNATIONAL SYMBOL OF ACCESSIBILITY. SEE CIVIL DRAWINGS.
- 10. ADA RAMP PER IBC AND ANSI. MAINTAIN CLEARANCE AT ENTRY DOOR AS REQUIRED PER CODE AND AS SHOWN. SEE CIVIL DRAWINGS FOR MORE INFORMATION.
- 11. "INVERTED-U" BIKE RACKS. COORDINATE FINAL LOCATION WITH OWNER.
- 12. NEW SITE LIGHT POLE. SEE CIVIL & ELECTRICAL DRAWINGS FOR MORE INFORMATION.
- 13. PARKING SIGN: "LOW EMITTING VEHICLES SIGN" PER BANK SIGNAGE AND LEED REQUIREMENTS. SIGN PROVIDED BY BANK SIGNAGE VENDOR. GC TO COORDINATE WITH SIGN VENDOR FOR INSTALLATION REQUIREMENTS.
- 14. DRIVE UP ATM. SEE A03.01 & A08.12 FOR MORE INFORMATION.
- 15. CONCRETE DIVIDER ISLAND.
- 16. PROVIDE CONCRETE DRIVE LANE UNDER CANOPY AT DRIVE-THRU. SEE CIVIL DRAWINGS.
- 17. PROVIDE BOLLARDS AS INDICATED, SEE A08.12 FOR ADDITIONAL INFORMATION.
- 18. TRASH RECEPTACLE PER SPEC. INSTALL PER MANUFACTURERS RECOMMENDATION.
- 19. DIRECTIONAL SIGNAGE. SEE CIVIL DRAWINGS FOR MORE INFORMATION.
- 20. UTILITY EASEMENT. SEE CIVIL DRAWINGS FOR MORE INFORMATION.
- 21. SIDEWALK CONNECTION TO PUBLIC WAY. SEE CIVIL DRAWINGS.
- 22. PROPERTY LINE. SEE CIVIL DRAWINGS FOR METES AND BOUNDS.
- 23. NEW MONUMENT/PYLON SIGN. SEE ELECTRICAL AND SIGN VENDOR DRAWINGS FOR ADDITIONAL INFORMATION.
- 24. LINE OF 100 YEAR FLOODPLAIN.
- 25. RETAINING WALL. SEE CIVIL DRAWINGS FOR MORE INFORMATION.
- 26. LINE INDICATES FIRE LANE. SEE CIVIL DRAWINGS FOR MORE INFORMATION.

Description:	No:	Date:
Issued for Schematic Design	3/26/2021	
Issued for COE Package	07/30/2021	
Issued for CD Review	09/10/2021	
Issued for Pricing and Permit	10/13/2021	







# Travis County Emergency Services District No.12

Item 1.

## Fire Prevention Office

11200 Gregg Ln. • PO Box 846  
Manor, Texas 78653  
O: 512-272-4502 • F: 512-428-5114

Ryan Smith, Fire Chief

## Alternative Methods of Compliance (AMOC)

Date of Notice: October 28, 2021

### Applicant:

Ben Henry  
Langan Engineering  
8951 Cypress Waters Blvd  
Suite 150  
Dallas, TX 75019

### Project Address:

Bank of America  
SWC Hwy 290 & FM 973  
Manor, TX 78653

AMOC Request Date: 10/13/2021

AMOC Approved: **YES (AMOC #1 ONLY)**

AMOC Topic: Fire Lane turn radius

Permit Number: 2021-1118

Mr. Henry,

A thorough review has been conducted on your AMOC request and letter dated October 13, 2021. Your proposed submittal was compared to the requirements set forth in the IFC 2015 with local amendments, IBC 2015, and any local amendments, and NFPA 13 2013 Ed.

We have found that your AMOC #1 request meets an alternative requirement of the local code adoptions and amendments and is approved.

However, we did note that the fire lane width in front of the building is less than the 25 feet as required by code.

Items reviewed are listed below.

- AMOC Request
  - AMCO item 1 – Turn radius
  - AMOC item 2 - does not apply to fire code and was not reviewed
- Provided site plan, pg C3.0

### NOTE:

- Correct fire lane widths for site plan review.

### Local AMOC Authority

**2015 IFC Sec. 104.9 Alternative materials and methods.** The provisions of this code are not intended to prevent the installation of any material or to prohibit any method of construction not specifically prescribed by this code, provided that any such alternative has been *approved*. The *fire code official* is authorized to approve an alternative material or method of construction where the *fire code official* finds that the proposed design is satisfactory and complies with the intent of the provisions of this code,



## Travis County Emergency Services District No.12

Item 1.

### Fire Prevention Office

Ryan Smith, Fire Chief

11200 Gregg Ln. • PO Box 846

Manor, Texas 78653

O: 512-272-4502 • F: 512-428-5114

## Alternative Methods of Compliance (AMOC)

Date of Notice: October 28, 2021

and that the material, method or work offered is, for the purpose intended, at least the equivalent of that prescribed in this code in quality, strength, effectiveness, *fire resistance*, durability and safety. Where the alternative material, design or method of construction is not approved, the *fire code official* shall respond in writing, stating the reasons why the alternative was not approved.

**2015 IFC Sec. 104.6.4 Administrative.** Application for modification, alternative methods or materials and the final decision of the *fire code official* shall be in writing and shall be officially recorded in the permanent records of the *fire code official*.

Respectfully,

A handwritten signature in blue ink, appearing to be "R. Smith", written over the printed name.

Ryan Smith  
Fire Chief

CC: TCESD12 Fire Prevention Division  
FireInspections360 Records Management System (FI360)


**TRAVIS COUNTY EMERGENCY SERVICES DISTRICT No. 12**

 11200 Gregg Lane  
 Manor, TX 78653  
 (512) 272-4502

DATE:

**ALTERNATE METHOD OF COMPLIANCE REQUEST**

ADDRESS:

SWC Hwy 290 &amp; FM 973 ✓

USE:

Financial / Bank ✓

TYPE OF CONSTRUCTION:

II-B

OCCUPANCY CLASSIFICATION:

Group B - Business

NEW CONSTRUCTION:

YES ☒ NO ☐

NUMBER OF BUILDINGS:

1

NUMBER OF STORIES:

1

SPRINKLERED:

YES ☐ NO ☒

BUILDING SQUARE FOOTAGE:

4087 sf ✓

NAME OF DEVELOPMENT:

Manor Commons ✓

CONTACT PERSON:

Ben Henry ✓

PHONE NUMBER:

(817) 944-1571

DEVELOPER NAME &amp; ADDRESS

ENGINEER NAME &amp; ADDRESS

Greenview Manor Commons SW LP

Jack Garner, PE

501 Vale Street, Austin, TX 78746

11801 Domain Blvd, 3rd Floor

Attn: Barth Timmerman

Austin, TX 78758

Phone: (512) 773-0498

Email: barth@greenviewdev.com

SELECT ONE

SITE ☒

BUILDING

FIRE SPRINKLER

OTHER

PROPOSAL DESCRIPTION: Explain how it is equivalent or what the hardship is. Attach documentation if needed. Developer shall provide letter of approval to AMOC and engineer of record shall seal this AMOC.

Bank of America seeks to develop the SW corner lot of Hwy 290 & FM 973. Lot width at the frontage (north) is 151.83 and narrows to 100.18' at the rear (south). Within the lot to the east exists floodplain and an 8" gas easement. What-a-burger exists to the west.

✓ AMOC #1 - Inside firelane radius at the NE corner of the building is 13' (25' req.) Outside radius has been increased to 25' (50' req.) for a firelane radial width in excess of 25' (29'-6" provided w/o FH).

AMOC #2 - City requires an ATM to provide queuing for three (8' x 20') cars. This third car at the southern ATM reduces the clear firelane to 23' (25' req.)

**NOT REVIEWED**

Consideration is requested to approve AMOC #1 and #2 as illustrated with plan sheets included.

**Amoc #1 Reviewed Only**

*Ben Henry*

Signature of Applicant or Legal Representative

Ben Henry

Printed Name

10-13-2021

Date

**FOR AUTHORITY HAVING JURISDICTION USE ONLY**

EVALUATION BY:

*P. Smith*

TITLE

*FIRE CHIEF*

DATE

*10/20/21*

APPROVED BY:

*P. Smith*

TITLE

*FIRE CHIEF*

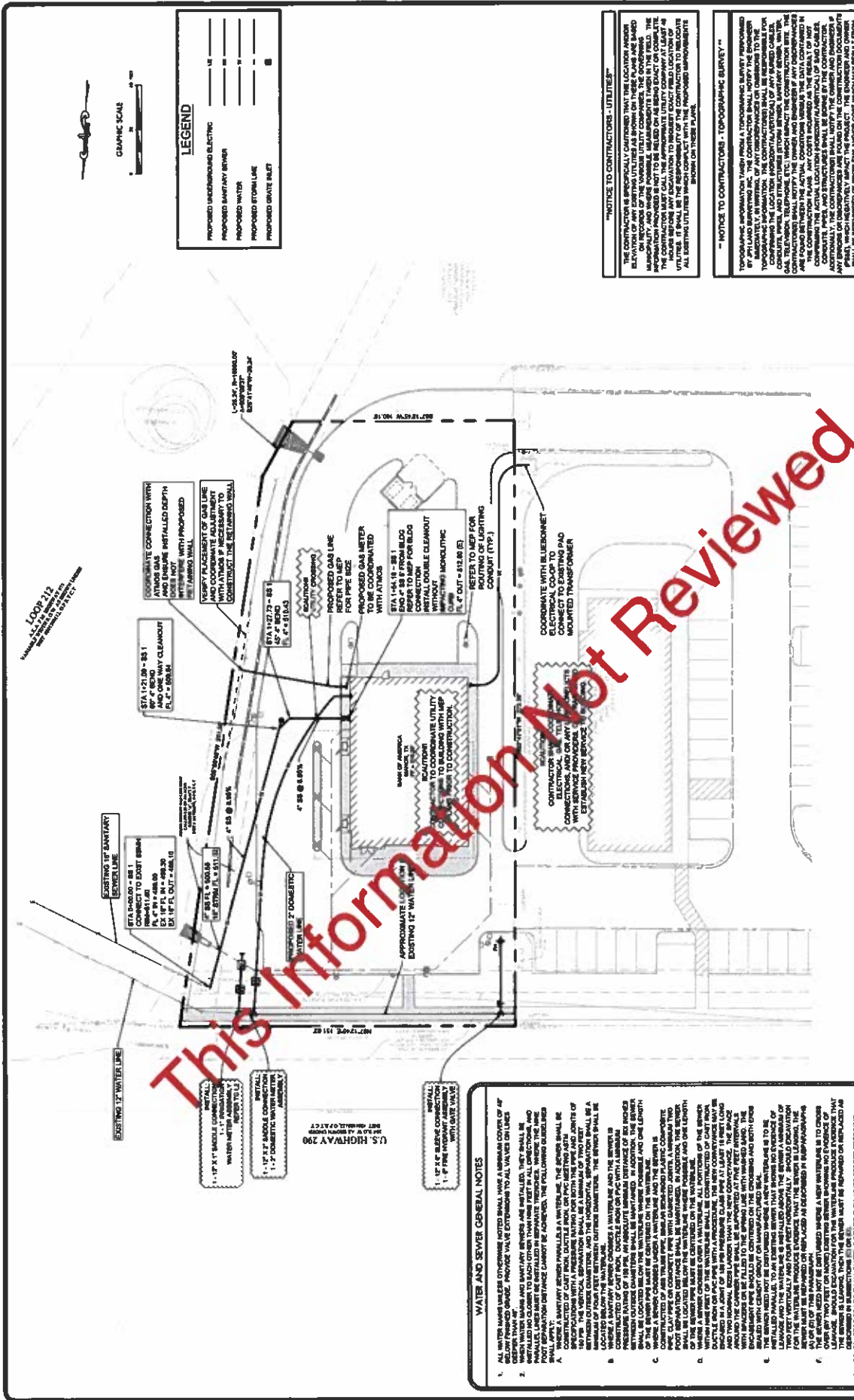
DATE

*10/20/21*









**"NOTICE TO CONTRACTORS - UTILITIES"**

THE CONTRACTOR IS SPECIFICALLY CAUTIONED THAT THE LOCATION AND/OR ELEVATION OF ANY EXISTING UTILITIES AS SHOWN ON THESE PLANS AND BASED THEREON, MAY BE IN ERROR. THE CONTRACTOR SHALL BE RESPONSIBLE FOR THE LOCATION AND DEPTH OF ALL EXISTING UTILITIES WHICH MAY BE ENCOUNTERED ON THESE PLANS.

[illegible]

**!!!CAUTION!!!**  
EXISTING OR FUTURE UNDERGROUND UTILITIES IN THE VICINITY  
OF VARIOUS TYPES OF EXISTING UNDERGROUND UTILITIES  
BY VARIOUS TYPES OF EXISTING UNDERGROUND UTILITIES  
BY VARIOUS TYPES OF EXISTING UNDERGROUND UTILITIES



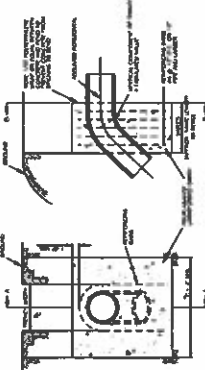
19

270

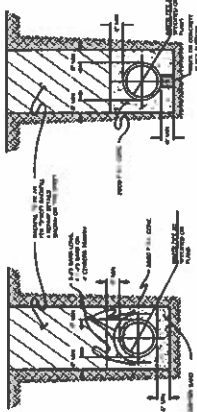
1990  
 1991  
 1992  
 1993  
 1994  
 1995  
 1996  
 1997  
 1998  
 1999  
 2000  
 2001  
 2002  
 2003  
 2004  
 2005  
 2006  
 2007  
 2008  
 2009  
 2010  
 2011  
 2012  
 2013  
 2014  
 2015  
 2016  
 2017  
 2018  
 2019  
 2020  
 2021  
 2022  
 2023  
 2024  
 2025  
 2026  
 2027  
 2028  
 2029  
 2030  
 2031  
 2032  
 2033  
 2034  
 2035  
 2036  
 2037  
 2038  
 2039  
 2040  
 2041  
 2042  
 2043  
 2044  
 2045  
 2046  
 2047  
 2048  
 2049  
 2050  
 2051  
 2052  
 2053  
 2054  
 2055  
 2056  
 2057  
 2058  
 2059  
 2060  
 2061  
 2062  
 2063  
 2064  
 2065  
 2066  
 2067  
 2068  
 2069  
 2070  
 2071  
 2072  
 2073  
 2074  
 2075  
 2076  
 2077  
 2078  
 2079  
 2080  
 2081  
 2082  
 2083  
 2084  
 2085  
 2086  
 2087  
 2088  
 2089  
 2090  
 2091  
 2092  
 2093  
 2094  
 2095  
 2096  
 2097  
 2098  
 2099  
 2100  
 2101  
 2102  
 2103  
 2104  
 2105  
 2106  
 2107  
 2108  
 2109  
 2110  
 2111  
 2112  
 2113  
 2114  
 2115  
 2116  
 2117  
 2118  
 2119  
 2120  
 2121  
 2122  
 2123  
 2124  
 2125  
 2126  
 2127  
 2128  
 2129  
 2130  
 2131  
 2132  
 2133  
 2134  
 2135  
 2136  
 2137  
 2138  
 2139  
 2140  
 2141  
 2142  
 2143  
 2144  
 2145  
 2146  
 2147  
 2148  
 2149  
 2150  
 2151  
 2152  
 2153  
 2154  
 2155  
 2156  
 2157  
 2158  
 2159  
 2160  
 2161  
 2162  
 2163  
 2164  
 2165  
 2166  
 2167  
 2168  
 2169  
 2170  
 2171  
 2172  
 2173  
 2174  
 2175  
 2176  
 2177  
 2178  
 2179  
 2180  
 2181  
 2182  
 2183  
 2184  
 2185  
 2186  
 2187  
 2188  
 2189  
 2190  
 2191  
 2192  
 2193  
 2194  
 2195  
 2196  
 2197  
 2198  
 2199  
 2200  
 2201  
 2202  
 2203  
 2204  
 2205  
 2206  
 2207  
 2208  
 2209  
 2210  
 2211  
 2212  
 2213  
 2214  
 2215  
 2216  
 2217  
 2218  
 2219  
 2220  
 2221  
 2222  
 2223  
 2224  
 2225  
 2226  
 2227  
 2228  
 2229  
 2230  
 2231  
 2232  
 2233  
 2234  
 2235  
 2236  
 2237  
 2238  
 2239  
 2240  
 2241  
 2242  
 2243  
 2244  
 2245  
 2246  
 2247  
 2248  
 2249  
 2250  
 2251  
 2252  
 2253  
 2254  
 2255  
 2256  
 2257  
 2258  
 2259  
 2260  
 2261  
 2262  
 2263  
 2264  
 2265  
 2266  
 2267  
 2268  
 2269  
 2270  
 2271  
 2272  
 2273  
 2274  
 2275  
 2276  
 2277  
 2278  
 2279  
 2280  
 2281  
 2282  
 2283  
 2284  
 2285  
 2286  
 2287  
 2288  
 2289  
 2290  
 2291  
 2292  
 2293  
 2294  
 2295  
 2296  
 2297  
 2298  
 2299  
 2300  
 2301  
 2302  
 2303  
 2304  
 2305  
 2306  
 2307  
 2308  
 2309  
 2310  
 2311  
 2312  
 2313  
 2314  
 2315  
 2316  
 2317  
 2318  
 2319  
 2320  
 2321  
 2322  
 2323  
 2324  
 2325  
 2326  
 2327  
 2328  
 2329  
 2330  
 2331  
 2332  
 2333  
 2334  
 2335  
 2336  
 2337  
 2338  
 2339  
 2340  
 2341  
 2342  
 2343  
 2344  
 2345  
 2346  
 2347  
 2348  
 2349  
 2350  
 2351  
 2352  
 2353  
 2354  
 2355  
 2356  
 2357  
 2358  
 2359  
 2360  
 2361  
 2362  
 2363  
 2364  
 2365  
 2366  
 2367  
 2368  
 2369  
 2370  
 2371  
 2372  
 2373  
 2374  
 2375  
 2376  
 2377  
 2378  
 2379  
 2380  
 2381  
 2382  
 2383  
 2384  
 2385  
 2386  
 2387  
 2388  
 2389  
 2390  
 2391  
 2392  
 2393  
 2394  
 2395  
 2396  
 2397  
 2398  
 2399  
 2400  
 2401  
 2402  
 2403  
 2404  
 2405  
 2406  
 2407  
 2408  
 2409  
 2410  
 2411  
 2412  
 2413  
 2414  
 2415  
 2416  
 2417  
 2418  
 2419  
 2420  
 2421  
 2422  
 2423  
 2424  
 2425  
 2426  
 2427  
 2428  
 2429  
 2430  
 2431  
 2432  
 2433  
 2434  
 2435  
 2436  
 2437  
 2438  
 2439  
 2440  
 2441  
 2442  
 2443  
 2444

1. **STRENGTHENING OF THE**  
2. **CONSTITUTION**  
3. **AND THE**  
4. **ROLE OF THE**  
5. **GOVERNMENT**  
6. **IN THE**  
7. **PROTECTION**  
8. **OF THE**  
9. **ENVIRONMENT**  
10. **AND**  
11. **THE**  
12. **ROLE OF THE**  
13. **GOVERNMENT**  
14. **IN THE**  
15. **PROTECTION**  
16. **OF THE**  
17. **ENVIRONMENT**  
18. **AND**  
19. **THE**  
20. **ROLE OF THE**  
21. **GOVERNMENT**  
22. **IN THE**  
23. **PROTECTION**  
24. **OF THE**  
25. **ENVIRONMENT**  
26. **AND**  
27. **THE**  
28. **ROLE OF THE**  
29. **GOVERNMENT**  
30. **IN THE**  
31. **PROTECTION**  
32. **OF THE**  
33. **ENVIRONMENT**  
34. **AND**  
35. **THE**  
36. **ROLE OF THE**  
37. **GOVERNMENT**  
38. **IN THE**  
39. **PROTECTION**  
40. **OF THE**  
41. **ENVIRONMENT**  
42. **AND**  
43. **THE**  
44. **ROLE OF THE**  
45. **GOVERNMENT**  
46. **IN THE**  
47. **PROTECTION**  
48. **OF THE**  
49. **ENVIRONMENT**  
50. **AND**  
51. **THE**  
52. **ROLE OF THE**  
53. **GOVERNMENT**  
54. **IN THE**  
55. **PROTECTION**  
56. **OF THE**  
57. **ENVIRONMENT**  
58. **AND**  
59. **THE**  
60. **ROLE OF THE**  
61. **GOVERNMENT**  
62. **IN THE**  
63. **PROTECTION**  
64. **OF THE**  
65. **ENVIRONMENT**  
66. **AND**  
67. **THE**  
68. **ROLE OF THE**  
69. **GOVERNMENT**  
70. **IN THE**  
71. **PROTECTION**  
72. **OF THE**  
73. **ENVIRONMENT**  
74. **AND**  
75. **THE**  
76. **ROLE OF THE**  
77. **GOVERNMENT**  
78. **IN THE**  
79. **PROTECTION**  
80. **OF THE**  
81. **ENVIRONMENT**  
82. **AND**  
83. **THE**  
84. **ROLE OF THE**  
85. **GOVERNMENT**  
86. **IN THE**  
87. **PROTECTION**  
88. **OF THE**  
89. **ENVIRONMENT**  
90. **AND**  
91. **THE**  
92. **ROLE OF THE**  
93. **GOVERNMENT**  
94. **IN THE**  
95. **PROTECTION**  
96. **OF THE**  
97. **ENVIRONMENT**  
98. **AND**  
99. **THE**  
100. **ROLE OF THE**  
101. **GOVERNMENT**  
102. **IN THE**  
103. **PROTECTION**  
104. **OF THE**  
105. **ENVIRONMENT**  
106. **AND**  
107. **THE**  
108. **ROLE OF THE**  
109. **GOVERNMENT**  
110. **IN THE**  
111. **PROTECTION**  
112. **OF THE**  
113. **ENVIRONMENT**  
114. **AND**  
115. **THE**  
116. **ROLE OF THE**  
117. **GOVERNMENT**  
118. **IN THE**  
119. **PROTECTION**  
120. **OF THE**  
121. **ENVIRONMENT**  
122. **AND**  
123. **THE**  
124. **ROLE OF THE**  
125. **GOVERNMENT**  
126. **IN THE**  
127. **PROTECTION**  
128. **OF THE**  
129. **ENVIRONMENT**  
130. **AND**  
131. **THE**  
132. **ROLE OF THE**  
133. **GOVERNMENT**  
134. **IN THE**  
135. **PROTECTION**  
136. **OF THE**  
137. **ENVIRONMENT**  
138. **AND**  
139. **THE**  
140. **ROLE OF THE**  
141. **GOVERNMENT**  
142. **IN THE**  
143. **PROTECTION**  
144. **OF THE**  
145. **ENVIRONMENT**  
146. **AND**  
147. **THE**  
148. **ROLE OF THE**  
149. **GOVERNMENT**  
150. **IN THE**  
151. **PROTECTION**  
152. **OF THE**  
153. **ENVIRONMENT**  
154. **AND**  
155. **THE**  
156. **ROLE OF THE**  
157. **GOVERNMENT**  
158. **IN THE**  
159. **PROTECTION**  
160. **OF THE**  
161. **ENVIRONMENT**  
162. **AND**  
163. **THE**  
164. **ROLE OF THE**  
165. **GOVERNMENT**  
166. **IN THE**  
167. **PROTECTION**  
168. **OF THE**  
169. **ENVIRONMENT**  
170. **AND**  
171. **THE**  
172. **ROLE OF THE**  
173. **GOVERNMENT**  
174. **IN THE**  
175. **PROTECTION**  
176. **OF THE**  
177. **ENVIRONMENT**  
178. **AND**  
179. **THE**  
180. **ROLE OF THE**  
181. **GOVERNMENT**  
182. **IN THE**  
183. **PROTECTION**  
184. **OF THE**  
185. **ENVIRONMENT**  
186. **AND**  
187. **THE**  
188. **ROLE OF THE**  
189. **GOVERNMENT**  
190. **IN THE**  
191. **PROTECTION**  
192. **OF THE**  
193. **ENVIRONMENT**  
194. **AND**  
195. **THE**  
196. **ROLE OF THE**  
197. **GOVERNMENT**  
198. **IN THE**  
199. **PROTECTION**  
200. **OF THE**  
201. **ENVIRONMENT**  
202. **AND**  
203. **THE**  
204. **ROLE OF THE**  
205. **GOVERNMENT**  
206. **IN THE**  
207. **PROTECTION**  
208. **OF THE**  
209. **ENVIRONMENT**  
210. **AND**  
211. **THE**  
212. **ROLE OF THE**  
213. **GOVERNMENT**  
214. **IN THE**  
215. **PROTECTION**  
216. **OF THE**  
217. **ENVIRONMENT**  
218. **AND**  
219. **THE**  
220. **ROLE OF THE**  
221. **GOVERNMENT**  
222. **IN THE**  
223. **PROTECTION**  
224. **OF THE**  
225. **ENVIRONMENT**  
226. **AND**  
227. **THE**  
228. **ROLE OF THE**  
229. **GOVERNMENT**  
230. **IN THE**  
231. **PROTECTION**  
232. **OF THE**  
233. **ENVIRONMENT**  
234. **AND**  
235. **THE**  
236. **ROLE OF THE**  
237. **GOVERNMENT**  
238. **IN THE**  
239. **PROTECTION**  
240. **OF THE**  
241. **ENVIRONMENT**  
242. **AND**  
243. **THE**  
244. **ROLE OF THE**  
245. **GOVERNMENT**  
246. **IN THE**  
247. **PROTECTION**  
248. **OF THE**  
249. **ENVIRONMENT**  
250. **AND**  
251. **THE**  
252. **ROLE OF THE**  
253. **GOVERNMENT**  
254. **IN THE**  
255. **PROTECTION**  
256. **OF THE**  
257. **ENVIRONMENT**  
258. **AND**  
259. **THE**  
260. **ROLE OF THE**  
261. **GOVERNMENT**  
262. **IN THE**  
263. **PROTECTION**  
264. **OF THE**  
265. **ENVIRONMENT**  
266. **AND**  
267. **THE**  
268. **ROLE OF THE**  
269. **GOVERNMENT**  
270. **IN THE**  
271. **PROTECTION**  
272. **OF THE**  
273. **ENVIRONMENT**  
274. **AND**  
275. **THE**  
276. **ROLE OF THE**  
277. **GOVERNMENT**  
278. **IN THE**  
279. **PROTECTION**  
280. **OF THE**  
281. **ENVIRONMENT**  
282. **AND**  
283. **THE**  
284. **ROLE OF THE**  
285. **GOVERNMENT**  
286. **IN THE**  
287. **PROTECTION**  
288. **OF THE**  
289. **ENVIRONMENT**  
290. **AND**  
291. **THE**  
292. **ROLE OF THE**  
293. **GOVERNMENT**  
294. **IN THE**  
295. **PROTECTION**  
296. **OF THE**  
297. **ENVIRONMENT**  
298. **AND**  
299. **THE**  
300. **ROLE OF THE**

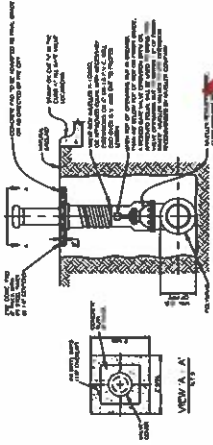
## \$21m



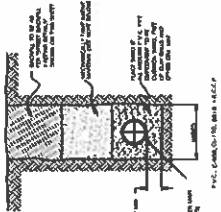
11



24



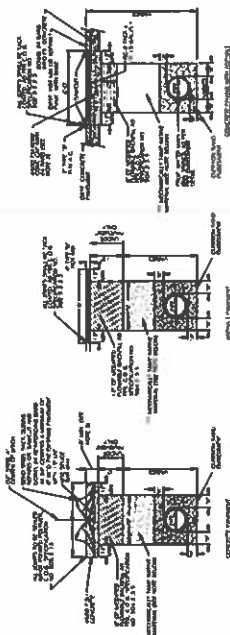
## ca.



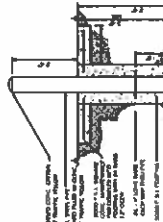
22

[illegible]

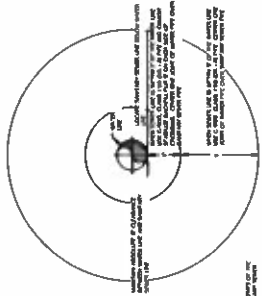
505

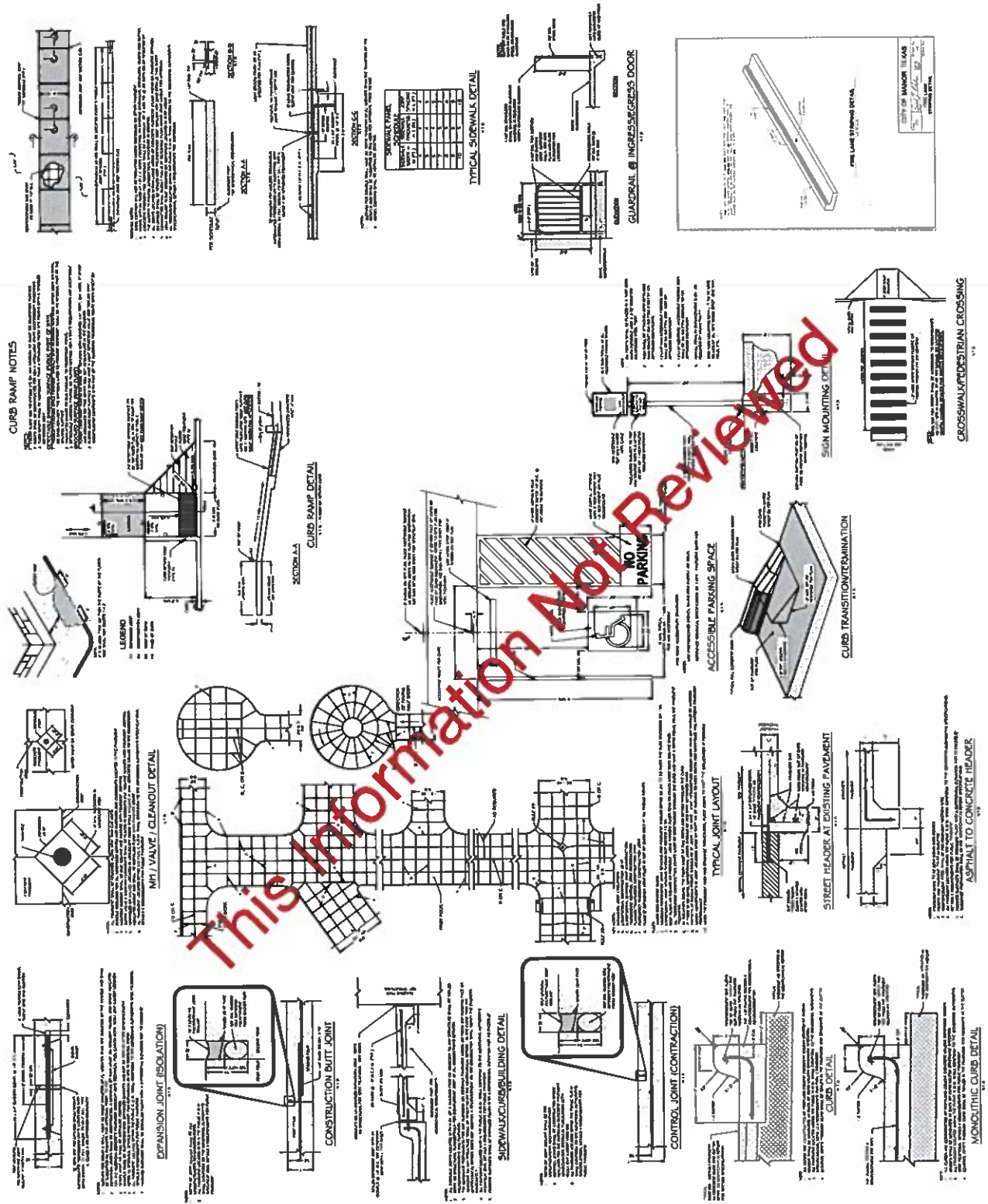


1



27

[illegible][illegible]





November 9, 2021

## City of Manor Development Services

# Notification for a Variance Application

Case Number: 2021-P-1375-VR

Case Manager: Scott Dunlop

Contact: [sdunlop@cityofmanor.org](mailto:sdunlop@cityofmanor.org) - 512-215-8262

The City of Manor Board of Adjustment will be conducting a public hearing to consider a variance request for Lot 7B, Block A Manor Commons SW Commercial to permit vehicle queueing within a fire lane. You are being notified because you own property within 300 feet of the property for which this request is being made. The request will be posted on the agenda as follows:

**Public Hearing: Conduct a public hearing on a variance request from Manor Code of Ordinances, Chapter 15, Article 15.02, Section 15.02.005(a) Queueing Requirements and located on Lot 7B, Block A, Manor Commons SW Commercial, Manor, TX, to permit vehicle queueing within a fire lane.**

Ordinance Requirement:

**Sec. 15.02.005 - Queueing requirements.**

(a) Queueing spaces shall be a minimum of eight by 20 feet in size. Stacking spaces may not impede on- or off-site vehicular or pedestrian movements, or extend into any portion of a right-of-way, or movements into, or out of off-street parking spaces, or fire lanes.

Variance Request:

2'2" x 11'17" encroachment being approximately 12.55 square feet.

The Board of Adjustment will convene at 6:30PM on November 23, 2021 at 105 E. Eggleston St. in the City Council Chambers.

If you have no interest in the case there is no need for you to attend. Comments may be addressed to the email address or phone number above. Any communications received will be made available to the Board Members during the discussion of this item.



Property ID: 568070

Butler Family Partnership LTD.

PO Box 9190

Austin, TX 78766-9190

Property ID: 786499

Greenview Development 973 LP

% Barth Timmermann

501 Vale ST

Austin, TX 78746-5732

Property ID: 943067

AJT Real Estate LLC

2501 Lou Hollow PL

Cedar Park, TX 78613-3107

Property ID: 922843

Greenview Development 973 LP

% Barth Timmermann

501 Vale ST

Austin, TX 78746-5732

Property ID: 874848

Greenview Manor Commons SW LP

PO Box 162304

Austin, TX 78716-2304

Property ID: 874849

Greenview Manor Commons SW LP

PO Box 162304

Austin, TX 78716-2304

Property ID: 860814

Surfview Manor LLC

19 Bay Vista Dr.

Mill Valley, CA 94941-1604



## AGENDA ITEM SUMMARY FORM

**PROPOSED MEETING DATE:** November 23, 2021  
**PREPARED BY:** Scott Dunlop, Interim City Manager  
**DEPARTMENT:** Administration

---

### AGENDA ITEM DESCRIPTION:

Consideration, discussion, and possible action to approve the Board of Adjustment Minutes for the October 27, 2021, Regular Session.

### BACKGROUND/SUMMARY:

**LEGAL REVIEW:** Not Applicable  
**FISCAL IMPACT:** No  
**PRESENTATION:** No  
**ATTACHMENTS:** Yes

- October 27, 2021, Board of Adjustments Regular Session Minutes

### STAFF RECOMMENDATION:

It is the City staff's recommendation that the Board of Adjustment approve the minutes of the October 27, 2021, Board of Adjustments Regular Session.

**PLANNING & ZONING COMMISSION:** Recommend Approval Disapproval None

---





**BOARD OF ADJUSTMENT  
REGULAR SESSION MINUTES  
OCTOBER 27, 2021**

**PRESENT:**

Aaron Moreno, Chair, Place 3

**BOARD MEMBERS:**

William D. Mann, Place 1 (Absent)  
Yolanda Daniels, Place 2  
James D. Sulcer, Place 4  
Karen S. Mazerac, Place 5  
Brandon Drayden, Alternate No. 1  
Neal Edwards, Alternate No. 2 (Absent)

**CITY STAFF:**

Scott Dunlop, Interim City Manager  
Lluvia Almaraz, City Secretary

**REGULAR SESSION – 6:30 P.M.**

With a quorum of the Board of Adjustment (BOA) present, the regular session of the BOA was called to order by Chair Aaron Moreno at 6:30 p.m. on Wednesday, October 27, 2021.

**PUBLIC COMMENTS**

No one appeared to speak at this time.

**PUBLIC HEARINGS**

1. **Public Hearing: Conduct a public hearing on a variance request from Manor Code of Ordinances, Chapter 14, Article 14.02, Section 14.02.007 and located at Lot 4, Block 55, locally known as 401 Llano Street, Manor, TX, to reduce the building setbacks. *Applicant: Joel Lopez. Owner: Fernandez Sergio.***

City staff recommended that the BOA conduct a public hearing.

Chair Moreno opened the public hearing.

Joel Lopez, 1920 Misty Ridge Dr., Leander, Texas, submitted at speaker card in support of this item and requested to speak. She stated that she is requesting the variance so a house can be built on the property.

Interim City Manager Dunlop stated that the property did not qualify to allow the request to go before the Planning and Zoning Commission. A description of the uniquely shaped property was given to the Board along with Zoning Code guidelines. He stated that the City Staff will be recommending approval for this specific variance request because the standard setbacks create an undo hardship for the owner.

Interim City Manager Dunlop and Property Owner Lopez answered questions from the Board regarding length of time property has been owned by the current owner and building plans for the property. Discussion was held by the Board regarding the building structure plans.

**MOTION:** Upon a motion made by Chair Moreno and Seconded by Board Member Mazerac to close the public hearing.

There was no further discussion.

**Motion to close carried 5-0**

## **CONSENT AGENDA**

### **2. Consideration, discussion, and possible action to approve the Board of Adjustment Minutes for the February 24, 2021, Regular Session and the September 22, 2021, Regular Session.**

**MOTION:** Upon a motion made by Board Member Mazerac and Seconded by Board Member Sulcer to approve the Consent Agenda with a correction to the February 24, 2021, Regular Session Minutes to reflect Board Member Sulcer as the opposing vote on Regular Agenda Item No. 3.

There was no further discussion.

**Motion to approve carried 5-0**

## **REGULAR AGENDA**

### **3. Consideration, discussion, and possible action on a variance request from Manor Code of Ordinances, Chapter 14, Article 14.02, Section 14.02.007 and located at Lot 4, Block 55, locally known as 401 Llano Street, Manor, TX, to reduce the building setbacks. *Applicant: Joel Lopez. Owner: Fernandez Sergio.***

City Staff recommended approval of the variance request with a 15 feet Front Setback and 10 feet Rear Setback for Lot 4, Block 55, locally known as 401 Llano Street, Manor, Texas.

**MOTION:** Upon a motion made by Board Member Mazerac and seconded by Board Member Sulcer to deny the variance request.

Discussion was held regarding the reason for the request and property details. The motion failed to carry.

**MOTION:** Upon a motion made by Board Member Sulcer and seconded by Board Member Daniels to approve the variance request as recommended by City Staff.

There was no further discussion.

**Motion to approve carried 4-1** (Board Member Mazerac voted against)

## **ADJOURNMENT**

The Regular Session of the Manor Board of Adjustment Adjourned at 6:51 p.m. on Wednesday, October 27, 2021.

These minutes approved by the Board of Adjustment on the 23<sup>rd</sup> day of November 2021

### **APPROVED:**

\_\_\_\_\_  
Chairperson

### **ATTEST:**

\_\_\_\_\_  
Scott Dunlop  
Interim City Manager



## AGENDA ITEM SUMMARY FORM

**PROPOSED MEETING DATE:** November 23, 2021  
**PREPARED BY:** Scott Dunlop, Interim City Manager  
**DEPARTMENT:** Administration

---

### AGENDA ITEM DESCRIPTION:

Consideration, discussion, and possible action on appointing a Chairperson for the Board of Adjustment.

### BACKGROUND/SUMMARY:

**LEGAL REVIEW:** Not Applicable  
**FISCAL IMPACT:** No  
**PRESENTATION:** No  
**ATTACHMENTS:** No

### STAFF RECOMMENDATION:

It is the City Staff's recommendation that the Board of Adjustments appoint a Chairperson.

**PLANNING & ZONING COMMISSION:** Recommend Approval Disapproval None

---





## AGENDA ITEM SUMMARY FORM

**PROPOSED MEETING DATE:** November 23, 2021  
**PREPARED BY:** Scott Dunlop, Interim City Manager  
**DEPARTMENT:** Administration

### AGENDA ITEM DESCRIPTION:

Consideration, discussion, and possible action on a variance request from Manor Code of Ordinances, Chapter 15, Article 15.02. Section 15.02.005(a) Queuing Requirements and located on Lot 7B, Block A, Manor Commons SW Commercial, Manor, TX to permit vehicle queuing within a fire lane.

### BACKGROUND/SUMMARY:

A bank with an associated ATM drive through is being proposed for the lot next to (east side) of Whataburger. They are required to carry the 26' fire lane around their site to provide connectivity to the fire lanes on the north and south ends of the development. Additionally, due to the N. FM 973 ROW the lot narrows in the rear and there is an area of floodplain along the eastern edge of the property that requires a retaining wall. The floodplain, retaining wall, and narrowing of the property due to the 973 alignment push the required fire lane further into the property which diminishes the developable area and has caused the slight encroachment into the fire lane.

**LEGAL REVIEW:** NO  
**FISCAL IMPACT:** NO  
**PRESENTATION:** NO  
**ATTACHMENTS:** YES

- Letter of Intent
- Queuing Diagrams
- ESD 12 AMOC Fire Lane Approval

### STAFF RECOMMENDATION:

It is the City Staff's recommendation that the Board of Adjustment approve a variance request from Manor Code of Ordinances, Chapter 15, Article 15.02. Section 15.02.005(a) Queuing Requirements and located on Lot 7B, Block A, Manor Commons SW Commercial, Manor, TX to permit vehicle queuing within a fire lane as shown on the future ATM queueing diagram.

**PLANNING & ZONING COMMISSION:** Recommend Approval Disapproval None



6000 Lombardo Blvd  
Suite 500  
Cleveland, OH 44131

November 1, 2021

Mr. Scott Dunlop, AICP  
Interim City Manager  
Development Services Director  
City of Manor Texas – City Hall  
Manor, TX 78653

Re: Bank of America – Manor Commons  
SWC Hwy 290 & FM 973  
Job No: 20.0003779.000

Dear Scott:

This letter is to ask for your consideration in granting a Planning & Zoning variance, specifically a variance regarding the Manor, Texas Code of Ordinances 09/10/21 Supplement 4, Section 15.02.005 – Queuing requirements. This variance request is only for the proposed future drive-up ATM location. The Day-One ATM location – which will be installed as part of the Bank's primary scope of work and will be available to the public once the Bank's construction is complete – meets the City's queuing requirements and does not require a variance. Diagrams have been uploaded to illustrate the 2 separate ATMs and their queuing.

We request this variance due to the nature of the property tapering to approximately 100', the need for a retaining wall along the east property line and the necessity of providing fire department access around the building. Because of these constraints, our site does not leave sufficient room for the City's minimum 3-car queuing line at the proposed future drive-up ATM without encroaching into the 26-foot wide Fire Lane. We request a variance to allow for a 2-car queuing line at the proposed future drive-up ATM to avoid encroachment into the Fire Lane or allow a third car to encroach into the Fire Lane by 2'-6" for approximately half a car length. If the variance is not granted, the Bank will have its drive-up ATM capacity limited to one ATM. The Bank prefers to have the option to add a second ATM in the future as part of their overall site development strategy. This variance request applies only to the future ATM - the site plan as submitted meets the City's requirement for 3 car queuing at the "day-one" ATM to be installed under the current scope of work.

As a result of the site constraints mentioned above, we have requested and have been granted an Alternate Method of Compliance (AMOC) for Fire Lane turning radii by the Travis County Emergency Services District No. 12, Fire Prevention Office.

November 1, 2021  
Scott Dunlap - City of Manor, TX  
Page 2

Kind Regards,

Robert J Sullivan Jr.

Digitally signed by Robert J Sullivan Jr.  
DN: C=US,  
E=rsullivan@nelsononline.com,  
O=Nelson, CN=Robert J Sullivan Jr.  
Date: 2021.11.01 12:11:27-04'00'

Robert J Sullivan, Jr. RA, NCARB  
Senior Architect, Manager

U:\Proj\Bank of America\TX\20.0003779.000-BofA Manor Commons FC 2.0 TX9-377\PROJECT RESOURCES\CODE DATA\AMOC -  
variance\Variance\letter of Intent.docx/rjs

**Client Representative:**Jones Lang LaSalle  
Attn: Amy Clark  
Tel: 214.709.9783  
Email: amy.clark@am.jll.com**Architect:**Attn: Rob Sullivan, Project Manager  
Tel: 216.830.1561  
Email: rsullivan@nelsonww.comArchitect of Record  
Attn: Vincent Duet, Technical Leader  
Tel: 215.825.6620  
Email: vduet@nelsonww.com**Civil:**LANGAN | Adams  
Attn: Ben Henry  
T: 817.328.3217  
E: bhenry@langan.com**Structural:**Urban Structure  
Attn: Jeff Reed, P.E., S.E.  
T: 214.295.5775  
E: jreed@urbanstruct.com**MEP:**Windward  
Attn: Charles Culbertson  
T: 972.934.6440  
E: charles.culbertson@windwardec.com

Description:	No:	Date:
Issued for Schematic Design		3/26/2021
Issued for COE Package		07/30/2021
Issued for CD Review		09/10/2021
Issued for Pricing and Permit		10/13/2021

**SITE GENERAL NOTES:**

- ALL SIDEWALK AND EGRESS ROUTE SLOPE TO BE 2% MAX (1.5% RECOMMENDED).
- ALL WALKWAY CAULKING TO BE GREY.
- 2% MAX SLOPE (CROSS & PATH ACROSS DRIVE IS 4.56%) AT DOOR MANEUVERING CLEARANCE 1.5%.
- SEE CIVIL DRAWINGS FOR MORE INFORMATION.
- SITE SIGNAGE BY BANK VENDOR. SEE SIGNAGE PACKAGE FOR SITE DIRECTIONAL AND/OR MONUMENT/PYLON SIGN.
- COORDINATE SITE LIGHTING WITH CIVIL & ELECTRICAL DRAWINGS.
- COORDINATE WITH LANDSCAPE DRAWINGS FOR LAYOUT.

**SITE KEYNOTES:**

- BUILDING CANOPY ABOVE.
- DRIVE-THRU CANOPY ABOVE.
- FLAGPOLE, SEE SHEET A09.30 FOR DETAILS. PROVIDE POWER AS REQUIRED FOR LIGHT.
- ASPHALT PAVING PER DOT SPEC. SEE CIVIL DRAWINGS FOR MORE INFORMATION.
- CURB, TYP. SEE CIVIL DRAWINGS FOR MORE INFORMATION.
- CONCRETE SIDEWALK. SEE CIVIL DRAWINGS FOR MORE INFORMATION.
- STRIPING. SEE CIVIL DRAWINGS FOR MORE INFORMATION.
- PARKING SIGN: PER BANK OF AMERICA SIGNAGE AND ADA GUIDELINES. SEE A09.30 AND CIVIL DRAWINGS FOR MORE INFORMATION.
- INTERNATIONAL SYMBOL OF ACCESSIBILITY. SEE CIVIL DRAWINGS.
- ADA RAMP PER IBC AND ANSI. MAINTAIN CLEARANCE AT ENTRY DOOR AS REQUIRED PER CODE AND AS SHOWN. SEE CIVIL DRAWINGS FOR MORE INFORMATION.
- "INVERTED-U" BIKE RACKS. COORDINATE FINAL LOCATION WITH OWNER.
- NEW SITE LIGHT POLE. SEE CIVIL & ELECTRICAL DRAWINGS FOR MORE INFORMATION.
- PARKING SIGN: "LOW EMITTING VEHICLES SIGN" PER BANK SIGNAGE AND LEED REQUIREMENTS. SIGN PROVIDED BY BANK SIGNAGE VENDOR. GC TO COORDINATE WITH SIGN VENDOR FOR INSTALLATION REQUIREMENTS.
- DRIVE UP ATM. SEE A03.01 & A08.12 FOR MORE INFORMATION.
- CONCRETE DIVIDER ISLAND.
- PROVIDE CONCRETE DRIVE LANE UNDER CANOPY AT DRIVE-THRU. SEE CIVIL DRAWINGS.
- PROVIDE BOLLARDS AS INDICATED, SEE A08.12 FOR ADDITIONAL INFORMATION.
- TRASH RECEPTACLE PER SPEC. INSTALL PER MANUFACTURERS RECOMMENDATION.
- DIRECTIONAL SIGNAGE. SEE CIVIL DRAWINGS FOR MORE INFORMATION.
- UTILITY EASEMENT. SEE CIVIL DRAWINGS FOR MORE INFORMATION.
- SIDEWALK CONNECTION TO PUBLIC WAY. SEE CIVIL DRAWINGS.
- PROPERTY LINE. SEE CIVIL DRAWINGS FOR METES AND BOUNDS.
- NEW MONUMENT/PYLON SIGN. SEE ELECTRICAL AND SIGN VENDOR DRAWINGS FOR ADDITIONAL INFORMATION.
- LINE OF 100 YEAR FLOODPLAIN.
- RETAINING WALL. SEE CIVIL DRAWINGS FOR MORE INFORMATION.
- LINE INDICATES FIRE LANE. SEE CIVIL DRAWINGS FOR MORE INFORMATION.

# Day-One ATM Queuing Diagram

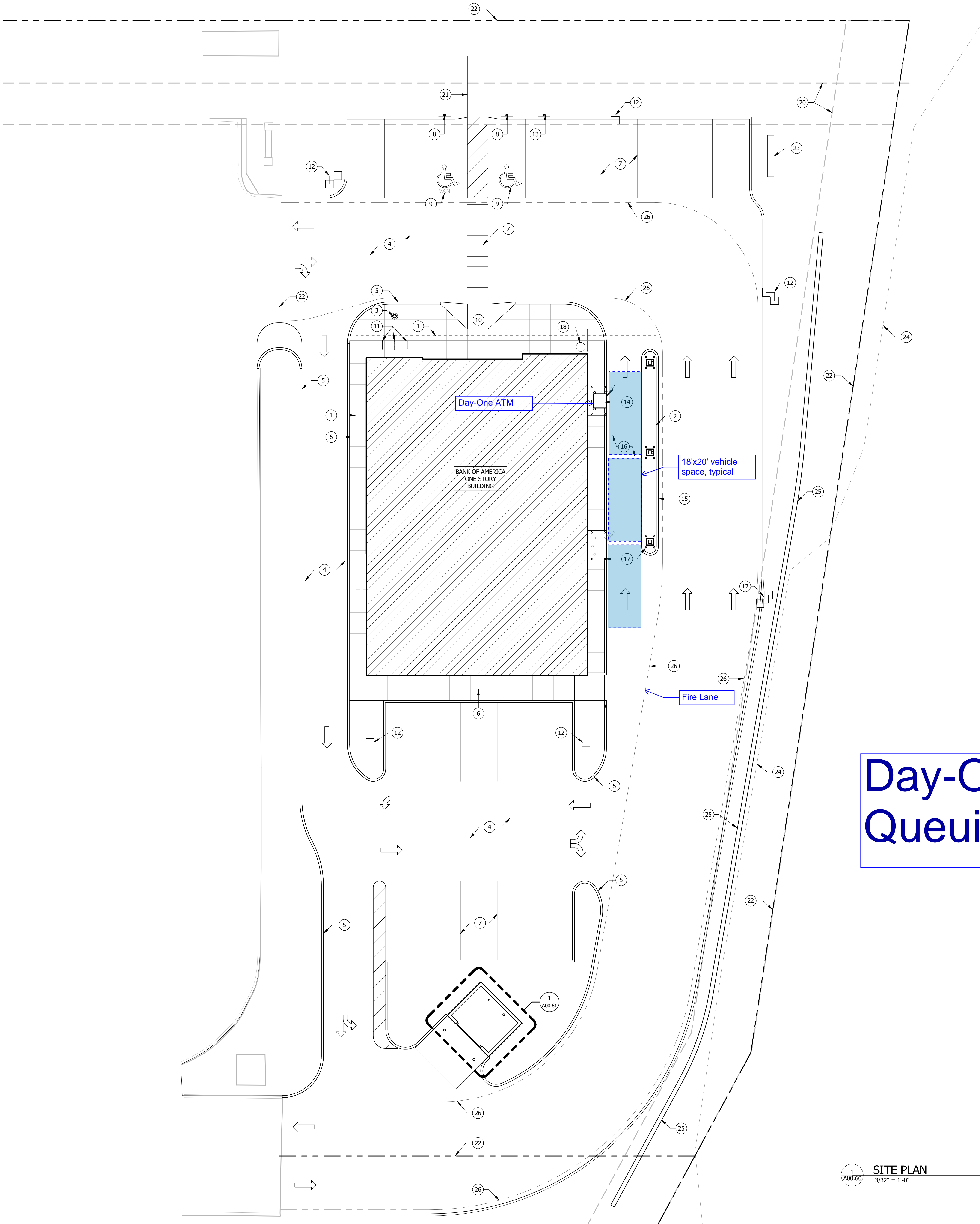
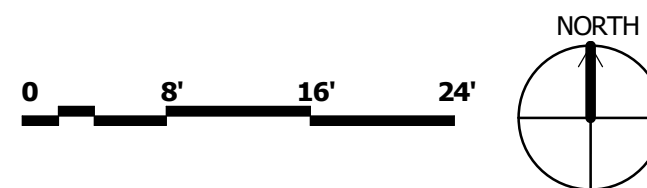
**BANK OF AMERICA**

Manor Commons

11828 Ring Dr.  
Manor, TX 78653-2105PROPERTY ID: TX9-377  
NSRP VERSION: 2.0  
BULLETIN: 2-2021ARCHITECTURAL SITE  
PLAN

Project No: 20.0003779.000 Reviewed By: AW

A00.60

1  
A00.60  
SITE PLAN  
3/32" = 1'-0"



**Client Representative:**Jones Lang LaSalle  
Attn: Amy Clark  
Tel: 214.709.9783  
Email: amy.clark@am.jll.com**Architect:**Attn: Rob Sullivan, Project Manager  
Tel: 216.830.1561  
Email: rsullivan@nelsonww.comArchitect of Record  
Attn: Vincent Duet, Technical Leader  
Tel: 215.825.6620  
Email: vduet@nelsonww.com**Civil:**LANGAN | Adams  
Attn: Ben Henry  
T: 817.328.3217  
E: bhenry@langan.com**Structural:**Urban Structure  
Attn: Jeff Reed, P.E., S.E.  
T: 214.295.5775  
E: jreed@urbanstruct.com**MEP:**Windward  
Attn: Charles Culbertson  
T: 972.934.6440  
E: charles.culbertson@windwardec.com

Description:	No:	Date:
Issued for Schematic Design		3/26/2021
Issued for COE Package		07/30/2021
Issued for CD Review		09/10/2021
Issued for Pricing and Permit		10/13/2021

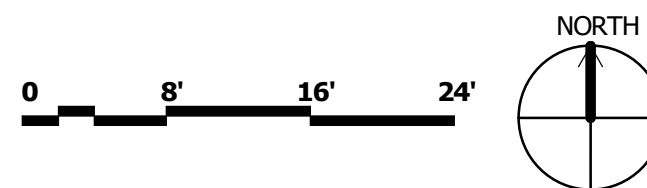
**SITE GENERAL NOTES:**

- ALL SIDEWALK AND EGRESS ROUTE SLOPE TO BE 2% MAX (1.5% RECOMMENDED).
- ALL WALKWAY CAULKING TO BE GREY.
- 2% MAX SLOPE (CROSS & PATH ACROSS DRIVE IS 4.56%) AT DOOR MANEUVERING CLEARANCE 1.5%.
- SEE CIVIL DRAWINGS FOR MORE INFORMATION.
- SITE SIGNAGE BY BANK VENDOR. SEE SIGNAGE PACKAGE FOR SITE DIRECTIONAL AND/OR MONUMENT/PYLON SIGN.
- COORDINATE SITE LIGHTING WITH CIVIL & ELECTRICAL DRAWINGS.
- COORDINATE WITH LANDSCAPE DRAWINGS FOR LAYOUT.

**SITE KEYNOTES:**

- BUILDING CANOPY ABOVE.
- DRIVE-THRU CANOPY ABOVE.
- FLAGPOLE, SEE SHEET A09.30 FOR DETAILS. PROVIDE POWER AS REQUIRED FOR LIGHT.
- ASPHALT PAVING PER DOT SPEC. SEE CIVIL DRAWINGS FOR MORE INFORMATION.
- CURB, TYP. SEE CIVIL DRAWINGS FOR MORE INFORMATION.
- CONCRETE SIDEWALK. SEE CIVIL DRAWINGS FOR MORE INFORMATION.
- STRIPING. SEE CIVIL DRAWINGS FOR MORE INFORMATION.
- PARKING SIGN: PER BANK OF AMERICA SIGNAGE AND ADA GUIDELINES. SEE A09.30 AND CIVIL DRAWINGS FOR MORE INFORMATION.
- INTERNATIONAL SYMBOL OF ACCESSIBILITY. SEE CIVIL DRAWINGS.
- ADA RAMP PER IBC AND ANSI. MAINTAIN CLEARANCE AT ENTRY DOOR AS REQUIRED PER CODE AND AS SHOWN. SEE CIVIL DRAWINGS FOR MORE INFORMATION.
- "INVERTED-U" BIKE RACKS. COORDINATE FINAL LOCATION WITH OWNER.
- NEW SITE LIGHT POLE. SEE CIVIL & ELECTRICAL DRAWINGS FOR MORE INFORMATION.
- PARKING SIGN: "LOW EMITTING VEHICLES SIGN" PER BANK SIGNAGE AND LEED REQUIREMENTS. SIGN PROVIDED BY BANK SIGNAGE VENDOR. GC TO COORDINATE WITH SIGN VENDOR FOR INSTALLATION REQUIREMENTS.
- DRIVE UP ATM. SEE A03.01 & A08.12 FOR MORE INFORMATION.
- CONCRETE DIVIDER ISLAND.
- PROVIDE CONCRETE DRIVE LANE UNDER CANOPY AT DRIVE-THRU. SEE CIVIL DRAWINGS.
- PROVIDE BOLLARDS AS INDICATED, SEE A08.12 FOR ADDITIONAL INFORMATION.
- TRASH RECEPTACLE PER SPEC. INSTALL PER MANUFACTURERS RECOMMENDATION.
- DIRECTIONAL SIGNAGE. SEE CIVIL DRAWINGS FOR MORE INFORMATION.
- UTILITY EASEMENT. SEE CIVIL DRAWINGS FOR MORE INFORMATION.
- SIDEWALK CONNECTION TO PUBLIC WAY. SEE CIVIL DRAWINGS.
- PROPERTY LINE. SEE CIVIL DRAWINGS FOR METES AND BOUNDS.
- NEW MONUMENT/PYLON SIGN. SEE ELECTRICAL AND SIGN VENDOR DRAWINGS FOR ADDITIONAL INFORMATION.
- LINE OF 100 YEAR FLOODPLAIN.
- RETAINING WALL. SEE CIVIL DRAWINGS FOR MORE INFORMATION.
- LINE INDICATES FIRE LANE. SEE CIVIL DRAWINGS FOR MORE INFORMATION.

# Future ATM Queuing Diagram

1  
A00.60  
SITE PLAN  
3/32" = 1'-0"**BANK OF AMERICA**  
Manor Commons11828 Ring Dr.  
Manor, TX 78653-2105PROPERTY ID: TX9-377  
NSRP VERSION: 2.0  
BULLETIN: 2-2021ARCHITECTURAL SITE  
PLAN

Project No: 20.0003779.000 Reviewed By: AW

A00.60



**Client Representative:**Jones Lang LaSalle  
Attn: Amy Clark  
Tel: 214.709.9783  
Email: amy.clark@am.jll.com**Architect:**Attn: Rob Sullivan, Project Manager  
Tel: 216.830.1561  
Email: rsullivan@nelsonww.comArchitect of Record  
Attn: Vincent Duet, Technical Leader  
Tel: 215.825.6620  
Email: vduet@nelsonww.com**Civil:**LANGAN | Adams  
Attn: Ben Henry  
T: 817.328.3217  
E: bhenry@langan.com**Structural:**Urban Structure  
Attn: Jeff Reed, P.E., S.E.  
T: 214.295.5775  
E: jreed@urbanstruct.com**MEP:**Windward  
Attn: Charles Culbertson  
T: 972.934.6440  
E: charles.culbertson@windwardec.com

Description:	No:	Date:
Issued for Schematic Design		3/26/2021
Issued for COE Package		07/30/2021
Issued for CD Review		09/10/2021
Issued for Pricing and Permit		10/13/2021

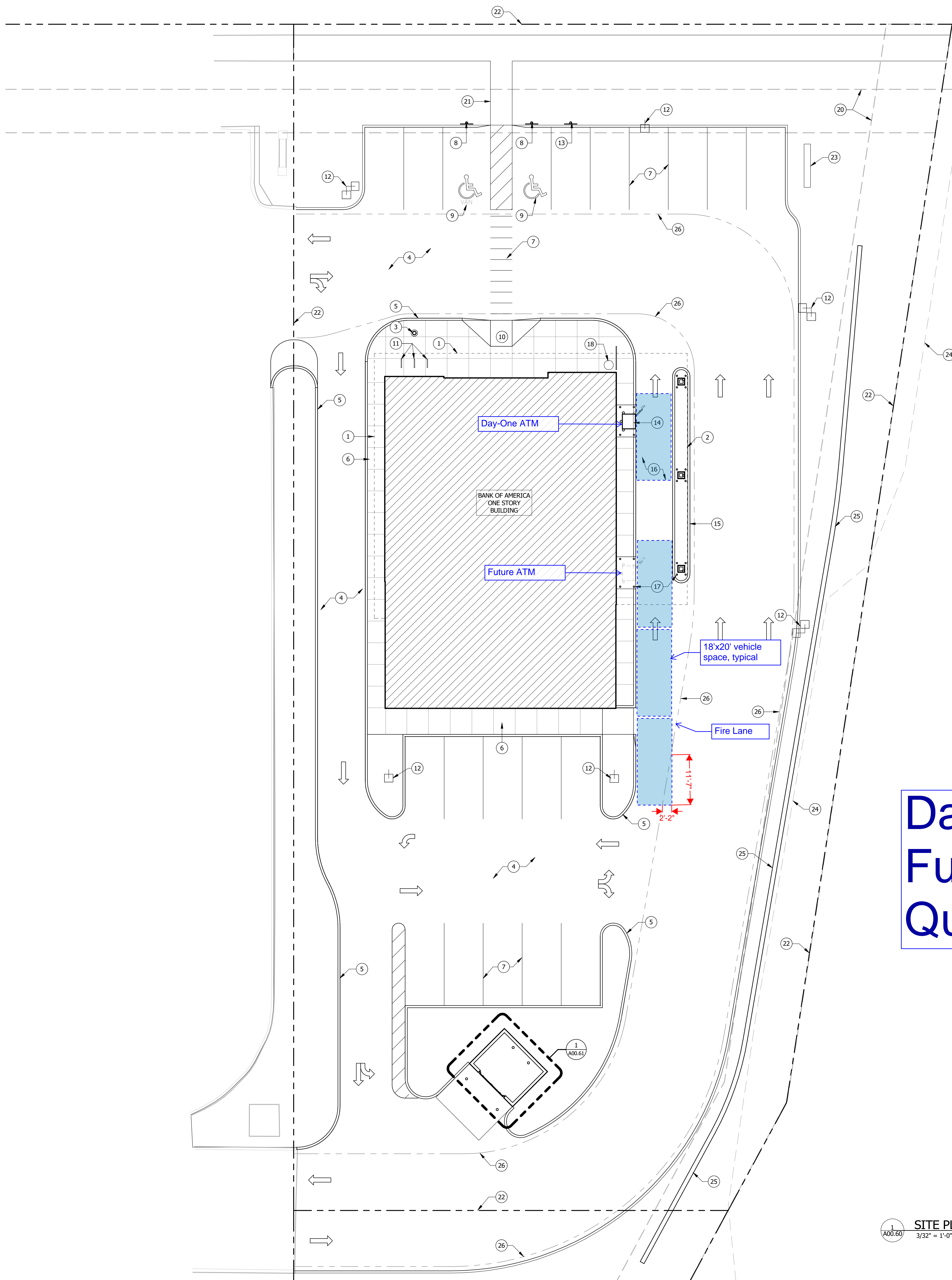
**SITE GENERAL NOTES:**

- ALL SIDEWALK AND EGRESS ROUTE SLOPE TO BE 2% MAX (1.5% RECOMMENDED).
- ALL WALKWAY CAULKING TO BE GREY.
- 2% MAX SLOPE (CROSS & PATH ACROSS DRIVE IS 4.56%) AT DOOR MANEUVERING CLEARANCE 1.5%.
- SEE CIVIL DRAWINGS FOR MORE INFORMATION.
- SITE SIGNAGE BY BANK VENDOR. SEE SIGNAGE PACKAGE FOR SITE DIRECTIONAL AND/OR MONUMENT/PYLON SIGN.
- COORDINATE SITE LIGHTING WITH CIVIL & ELECTRICAL DRAWINGS.
- COORDINATE WITH LANDSCAPE DRAWINGS FOR LAYOUT.

**SITE KEYNOTES:**

- BUILDING CANOPY ABOVE.
- DRIVE-THRU CANOPY ABOVE.
- FLAGPOLE, SEE SHEET A09.30 FOR DETAILS. PROVIDE POWER AS REQUIRED FOR LIGHT.
- ASPHALT PAVING PER DOT SPEC. SEE CIVIL DRAWINGS FOR MORE INFORMATION.
- CURB, TYP. SEE CIVIL DRAWINGS FOR MORE INFORMATION.
- CONCRETE SIDEWALK. SEE CIVIL DRAWINGS FOR MORE INFORMATION.
- STRIPING. SEE CIVIL DRAWINGS FOR MORE INFORMATION.
- PARKING SIGN: PER BANK OF AMERICA SIGNAGE AND ADA GUIDELINES. SEE A09.30 AND CIVIL DRAWINGS FOR MORE INFORMATION.
- INTERNATIONAL SYMBOL OF ACCESSIBILITY. SEE CIVIL DRAWINGS.
- ADA RAMP PER IBC AND ANSI. MAINTAIN CLEARANCE AT ENTRY DOOR AS REQUIRED PER CODE AND AS SHOWN. SEE CIVIL DRAWINGS FOR MORE INFORMATION.
- "INVERTED-U" BIKE RACKS. COORDINATE FINAL LOCATION WITH OWNER.
- NEW SITE LIGHT POLE. SEE CIVIL & ELECTRICAL DRAWINGS FOR MORE INFORMATION.
- PARKING SIGN: "LOW EMITTING VEHICLES SIGN" PER BANK SIGNAGE AND LEED REQUIREMENTS. SIGN PROVIDED BY BANK SIGNAGE VENDOR. GC TO COORDINATE WITH SIGN VENDOR FOR INSTALLATION REQUIREMENTS.
- DRIVE UP ATM. SEE A03.01 & A08.12 FOR MORE INFORMATION.
- CONCRETE DIVIDER ISLAND.
- PROVIDE CONCRETE DRIVE LANE UNDER CANOPY AT DRIVE-THRU. SEE CIVIL DRAWINGS.
- PROVIDE BOLLARDS AS INDICATED, SEE A08.12 FOR ADDITIONAL INFORMATION.
- TRASH RECEPTACLE PER SPEC. INSTALL PER MANUFACTURERS RECOMMENDATION.
- DIRECTIONAL SIGNAGE. SEE CIVIL DRAWINGS FOR MORE INFORMATION.
- UTILITY EASEMENT. SEE CIVIL DRAWINGS FOR MORE INFORMATION.
- SIDEWALK CONNECTION TO PUBLIC WAY. SEE CIVIL DRAWINGS.
- PROPERTY LINE. SEE CIVIL DRAWINGS FOR METES AND BOUNDS.
- NEW MONUMENT/PYLON SIGN. SEE ELECTRICAL AND SIGN VENDOR DRAWINGS FOR ADDITIONAL INFORMATION.
- LINE OF 100 YEAR FLOODPLAIN.
- RETAINING WALL. SEE CIVIL DRAWINGS FOR MORE INFORMATION.
- LINE INDICATES FIRE LANE. SEE CIVIL DRAWINGS FOR MORE INFORMATION.

# Day-One and Future ATM Queuing Diagram





# Travis County Emergency Services District No.12

Item 4.

## Fire Prevention Office

11200 Gregg Ln. • PO Box 846  
Manor, Texas 78653  
O: 512-272-4502 • F: 512-428-5114

Ryan Smith, Fire Chief

## Alternative Methods of Compliance (AMOC)

Date of Notice: October 28, 2021

### Applicant:

Ben Henry  
Langan Engineering  
8951 Cypress Waters Blvd  
Suite 150  
Dallas, TX 75019

### Project Address:

Bank of America  
SWC Hwy 290 & FM 973  
Manor, TX 78653

AMOC Request Date: 10/13/2021

AMOC Approved: **YES (AMOC #1 ONLY)**

AMOC Topic: Fire Lane turn radius

Permit Number: 2021-1118

Mr. Henry,

A thorough review has been conducted on your AMOC request and letter dated October 13, 2021. Your proposed submittal was compared to the requirements set forth in the IFC 2015 with local amendments, IBC 2015, and any local amendments, and NFPA 13 2013 Ed.

We have found that your AMOC #1 request meets an alternative requirement of the local code adoptions and amendments and is approved.

However, we did note that the fire lane width in front of the building is less than the 25 feet as required by code.

Items reviewed are listed below.

- AMOC Request
  - AMCO item 1 – Turn radius
  - AMOC item 2 - does not apply to fire code and was not reviewed
- Provided site plan, pg C3.0

### NOTE:

- Correct fire lane widths for site plan review.

### Local AMOC Authority

**2015 IFC Sec. 104.9 Alternative materials and methods.** The provisions of this code are not intended to prevent the installation of any material or to prohibit any method of construction not specifically prescribed by this code, provided that any such alternative has been *approved*. The *fire code official* is authorized to approve an alternative material or method of construction where the *fire code official* finds that the proposed design is satisfactory and complies with the intent of the provisions of this code,



## Travis County Emergency Services District No.12

Item 4.

### Fire Prevention Office

Ryan Smith, Fire Chief

11200 Gregg Ln. • PO Box 846

Manor, Texas 78653

O: 512-272-4502 • F: 512-428-5114

## Alternative Methods of Compliance (AMOC)

Date of Notice: October 28, 2021

and that the material, method or work offered is, for the purpose intended, at least the equivalent of that prescribed in this code in quality, strength, effectiveness, *fire resistance*, durability and safety. Where the alternative material, design or method of construction is not approved, the *fire code official* shall respond in writing, stating the reasons why the alternative was not approved.

**2015 IFC Sec. 104.6.4 Administrative.** Application for modification, alternative methods or materials and the final decision of the *fire code official* shall be in writing and shall be officially recorded in the permanent records of the *fire code official*.

Respectfully,

A handwritten signature in blue ink, appearing to be "R. Smith", written over the printed name.

Ryan Smith  
Fire Chief

CC: TCESD12 Fire Prevention Division  
FireInspections360 Records Management System (FI360)




**TRAVIS COUNTY EMERGENCY SERVICES DISTRICT No. 12**

 11200 Gregg Lane  
 Manor, TX 78653  
 (512) 272-4502

DATE:

**ALTERNATE METHOD OF COMPLIANCE REQUEST**

ADDRESS:

SWC Hwy 290 &amp; FM 973 ✓

USE:

Financial / Bank ✓

TYPE OF CONSTRUCTION:

II-B

OCCUPANCY CLASSIFICATION:

Group B - Business

NEW CONSTRUCTION:

YES ☒ NO ☐

NUMBER OF BUILDINGS:

1

NUMBER OF STORIES:

1

SPRINKLERED:

YES ☐ NO ☒

BUILDING SQUARE FOOTAGE:

4087 sf ✓

NAME OF DEVELOPMENT:

Manor Commons ✓

CONTACT PERSON:

Ben Henry ✓

PHONE NUMBER:

(817) 944-1571

DEVELOPER NAME &amp; ADDRESS

ENGINEER NAME &amp; ADDRESS

Greenview Manor Commons SW LP

Jack Garner, PE

501 Vale Street, Austin, TX 78746

11801 Domain Blvd, 3rd Floor

Attn: Barth Timmerman

Austin, TX 78758

Phone: (512) 773-0498

Email: barth@greenviewdev.com

SELECT ONE

SITE ☒

BUILDING

FIRE SPRINKLER

OTHER

PROPOSAL DESCRIPTION: Explain how it is equivalent or what the hardship is. Attach documentation if needed. Developer shall provide letter of approval to AMOC and engineer of record shall seal this AMOC.

Bank of America seeks to develop the SW corner lot of Hwy 290 & FM 973. Lot width at the frontage (north) is 151.83 and narrows to 100.18' at the rear (south). Within the lot to the east exists floodplain and an 8" gas easement. What-a-burger exists to the west.

✓ AMOC #1 - Inside firelane radius at the NE corner of the building is 13' (25' req.) Outside radius has been increased to 25' (50' req.) for a firelane radial width in excess of 25' (29'-6" provided w/o FH).

AMOC #2 - City requires an ATM to provide queuing for three (8' x 20') cars. This third car at the southern ATM reduces the clear firelane to 23' (25' req.)

**NOT REVIEWED**

Consideration is requested to approve AMOC #1 and #2 as illustrated with plan sheets included.

**Amoc #1 Reviewed Only**

*Ben Henry*

Signature of Applicant or Legal Representative

Ben Henry

Printed Name

10-13-2021

Date

**FOR AUTHORITY HAVING JURISDICTION USE ONLY**

EVALUATION BY:

*P. Smith*

TITLE

*FIRE CHIEF*

DATE

*10/20/21*

APPROVED BY:

*P. Smith*

TITLE

*FIRE CHIEF*

DATE

*10/20/21*

IN THE CITY OF MANOR,  
TRAVIS COUNTY, TEXAS

**SURVEYOR**  
**IPH LAND SURVEYING, INC.**  
 1515 E. PALM VALLEY BLVD., STE. A4  
 ROUND ROCK, TEXAS 78664  
**CONTACT: CHRIS HENDERSON R.P.L.S.**  
**PHONE: (817) 431-4971**  
**EMAIL: CHRIS@IPHL.COM**



## SITE MAP

SCALE  
1" = 2000'

**LANGAN | Adams**

9046 N. Marine Expressway, Ste 110 • Appleton, Texas 75424 • (717) 219-7000

ANDAM PROJECT NO. S20017501

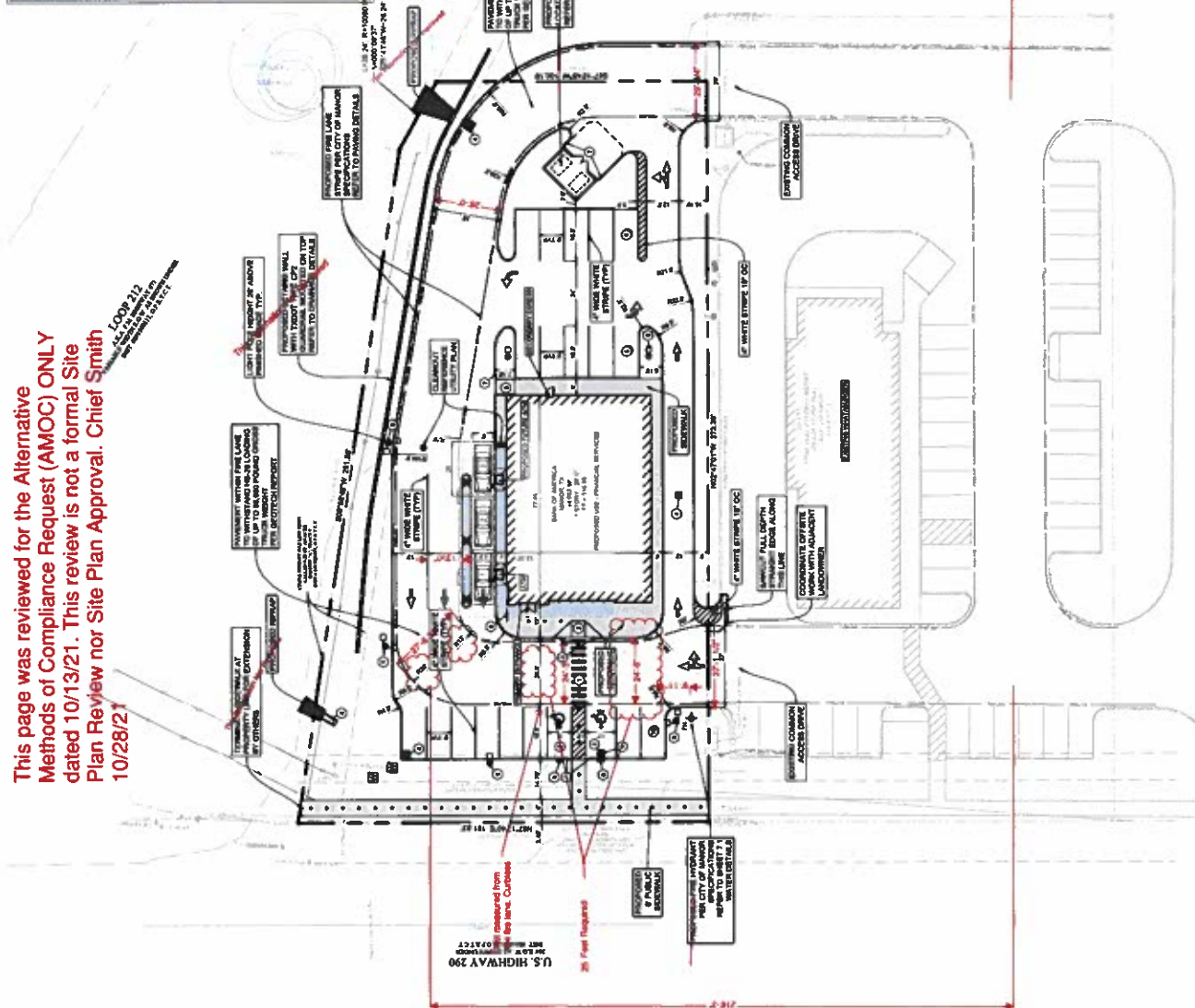
October 2021

Sheet Number	Sheet Title
C1.0	COVER SHEET
C1.1	GENERAL NOTES
C1.2	MAJOR CONSTRUCTION NOTES
C1.3	TOPOGRAPHIC SURVEY
C2.0	DEMOLITION AND EROSION CONTROL PLAN
C3.0	SITE PLAN
C4.0	GRADING PLAN
C5.0	EXISTING DRAINAGE AREA MAP
C5.1	PROPOSED DRAINAGE AREA MAP
C5.2	DRAINAGE PLAN
C6.0	UTILITY PLAN
C7.0	EROSION CONTROL DETAILS
C7.1	WATER DETAILS
C7.2	SANITARY SEWER DETAILS
C7.3	WALL & DRAINAGE DETAILS
C7.4	PAVING DETAILS
L1.0	LANDSCAPE PLAN
L2.0	IRRIGATION PLAN
L2.1	IRRIGATION DETAILS

BITE SUMMARY	
BITE ADDRESS:	11550 BING DRIVE MADISON, TEXAS 76704-1900
APPLICABLE CODE:	C3 INTERNATIONAL FINE CODE
CURRENT ZONE/DISTRICT:	C3-MEDIAN COMMERCIAL
TOTAL SITE AREA:	0.64 AC.
AND WITHIN LOTS OF CONSTRUCTION:	48 861 AC.
SPRINKLER COVER:	170%.
SPRINKLER COVER:	48 812 AC.
BUILDING COMPARE:	4-480 SF
LEGAL DESCRIPTION:	PORTION OF LOT 1, BLOCK A, PINE PLAT 144, COUNTY OF TARRANT, STATE OF TEXAS, BEING 0.64 AC. ±, MORE OR LESS, BEING PART OF A TRACT OWNED BY COMMERIAL U.P.A., A TEXAS LIMITED PARTNERSHIP, BEING PART 3 OF 10 LOTS OF 0.64 AC. ±.

[illegible]

This page was reviewed for the Alternative Methods of Compliance Request (AMOC) ONLY dated 10/13/21. This review is not a formal Site Plan Review nor Site Plan Approval. Chief Smith 10/28/21



## SITE PLAN

### LEGEND

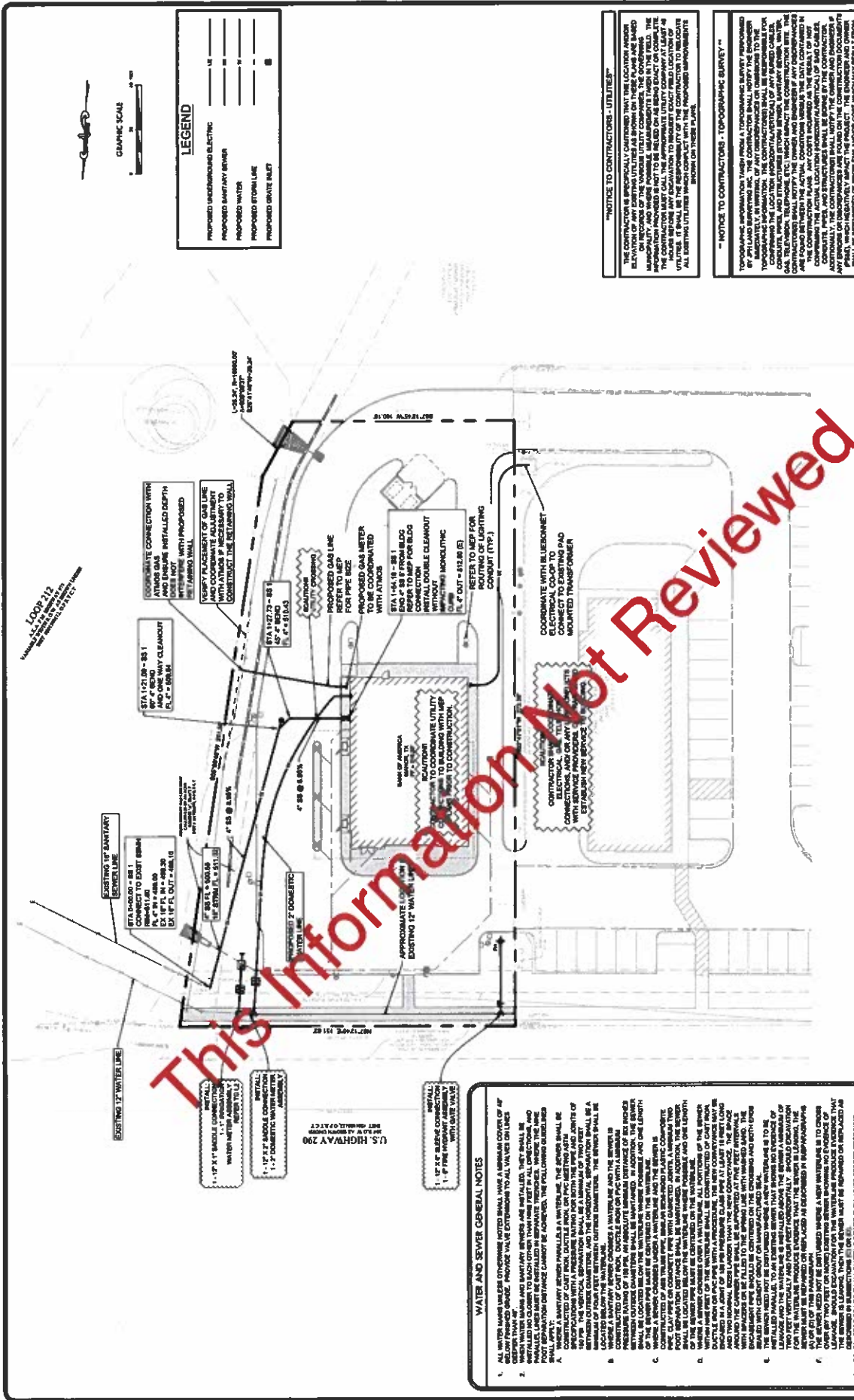
### GRAPHIC SCALE

SYMBOL	KEY
①	CROWN/SHAW (FIB. CROSSING TYPICAL, SEE FINING DETAILS)
②	TYPICAL ACCESSIBLE FINING PLACES (SEE FINING DETAILS)
③	DETAIL: BARRIER FREE RAMP (SEE RAMP TO FINING DETAILS)
④	IMPROVED TRANSITION (SEE RAMP TO FINING DETAILS)
⑤	ACCESSIBLE FINING (SEE RAMP TO FINING DETAILS)
⑥	IMPROVED FINING (SEE RAMP TO FINING DETAILS)
⑦	TRANSITION CLIMB (SEE RAMP TO FINING DETAILS)
⑧	ACCESSIBLE DOOR (SEE RAMP TO FINING DETAILS)
⑨	DOOR (SEE RAMP TO FINING DETAILS)
⑩	DOOR (SEE RAMP TO FINING DETAILS)
⑪	DOOR (SEE RAMP TO FINING DETAILS)
⑫	DOOR (SEE RAMP TO FINING DETAILS)
⑬	DOOR (SEE RAMP TO FINING DETAILS)
⑭	DOOR (SEE RAMP TO FINING DETAILS)
⑮	DOOR (SEE RAMP TO FINING DETAILS)
⑯	DOOR (SEE RAMP TO FINING DETAILS)
⑰	DOOR (SEE RAMP TO FINING DETAILS)
⑱	DOOR (SEE RAMP TO FINING DETAILS)
⑲	DOOR (SEE RAMP TO FINING DETAILS)
⑳	DOOR (SEE RAMP TO FINING DETAILS)
㉑	DOOR (SEE RAMP TO FINING DETAILS)
㉒	DOOR (SEE RAMP TO FINING DETAILS)
㉓	DOOR (SEE RAMP TO FINING DETAILS)
㉔	DOOR (SEE RAMP TO FINING DETAILS)
㉕	DOOR (SEE RAMP TO FINING DETAILS)
㉖	DOOR (SEE RAMP TO FINING DETAILS)
㉗	DOOR (SEE RAMP TO FINING DETAILS)
㉘	DOOR (SEE RAMP TO FINING DETAILS)
㉙	DOOR (SEE RAMP TO FINING DETAILS)
㉚	DOOR (SEE RAMP TO FINING DETAILS)
㉛	DOOR (SEE RAMP TO FINING DETAILS)
㉜	DOOR (SEE RAMP TO FINING DETAILS)
㉝	DOOR (SEE RAMP TO FINING DETAILS)
㉞	DOOR (SEE RAMP TO FINING DETAILS)
㉟	DOOR (SEE RAMP TO FINING DETAILS)
㊱	DOOR (SEE RAMP TO FINING DETAILS)
㊲	DOOR (SEE RAMP TO FINING DETAILS)
㊳	DOOR (SEE RAMP TO FINING DETAILS)
㊴	DOOR (SEE RAMP TO FINING DETAILS)
㊵	DOOR (SEE RAMP TO FINING DETAILS)
㊶	DOOR (SEE RAMP TO FINING DETAILS)
㊷	DOOR (SEE RAMP TO FINING DETAILS)
㊸	DOOR (SEE RAMP TO FINING DETAILS)
㊹	DOOR (SEE RAMP TO FINING DETAILS)
㊺	DOOR (SEE RAMP TO FINING DETAILS)
㊻	DOOR (SEE RAMP TO FINING DETAILS)
㊼	DOOR (SEE RAMP TO FINING DETAILS)
㊽	DOOR (SEE RAMP TO FINING DETAILS)
㊾	DOOR (SEE RAMP TO FINING DETAILS)
㊿	DOOR (SEE RAMP TO FINING DETAILS)

ED FACE AND  
CUNE  
ED LIGHT TO MEDIAN  
PAYMENT (24-2) REF  
IN REPORT  
ED LIGHT TRAFFIC  
NT (24-1) REF. ON TECH  
ED BODENWALK  
ED RETAINING WALL  
TRAFFIC ARROW  
45 STOPPING  
ED PAVE HYDRANT  
ED GRATE INLET  
IBLE ROUTE  
COUNT

[illegible]





**"NOTICE TO CONTRACTORS - UTILITIES"**

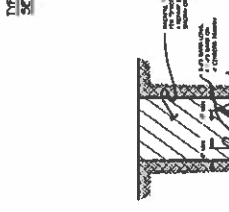
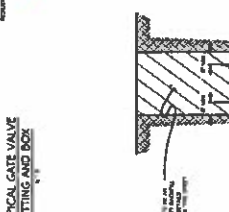
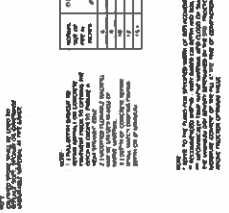
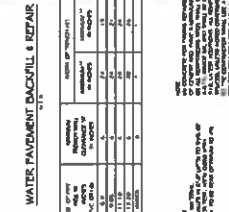
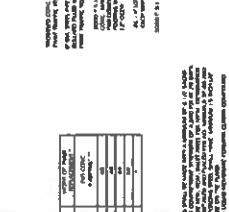
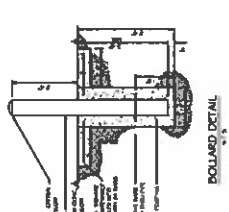
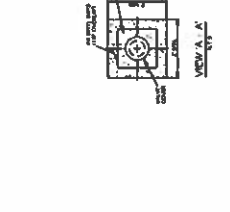
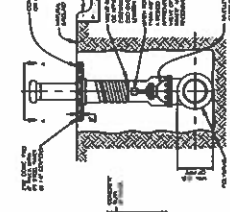
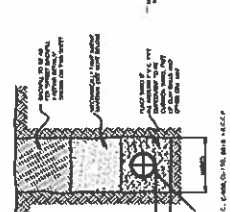
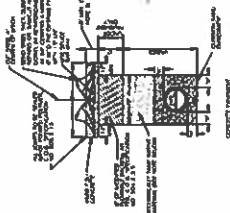
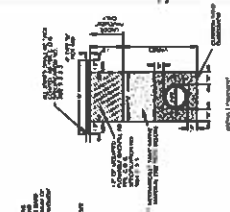
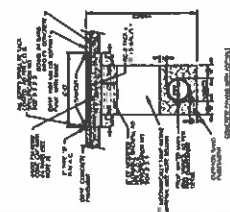
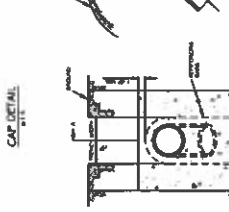
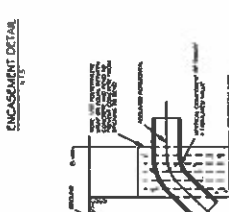
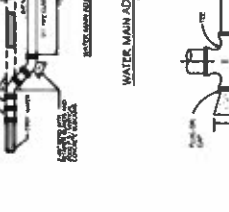
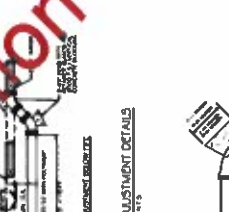
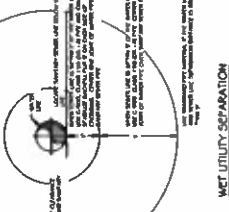
THE CONTRACTOR IS SPECIFICALLY CAUTIONED THAT THE LOCATION AND/OR ELEVATION OF ANY EXISTING UTILITIES AS SHOWN ON THESE PLANS ARE BASED ON THE BEST AVAILABLE INFORMATION. THE CONTRACTOR SHALL BE RESPONSIBLE FOR VERIFYING THE LOCATION AND DEPTH OF ALL UTILITIES PRIOR TO CONSTRUCTION. THE CONTRACTOR SHALL BE RESPONSIBLE FOR OBTAINING ALL NECESSARY PERMITS AND FOR PROTECTING ALL UTILITIES. THE CONTRACTOR SHALL BE RESPONSIBLE FOR THE LOCATION AND DEPTH OF ALL UTILITIES. IT SHALL BE THE RESPONSIBILITY OF THE CONTRACTOR TO RELOCATE ALL EXISTING UTILITIES WHICH CONFLICT WITH THE PROPOSED IMPROVEMENTS SHOWN ON THESE PLANS.

[illegible]

**!!!CAUTION!!!**  
EXISTING OR FUTURE UNDERGROUND UTILITIES IN THE VICINITY  
OF THE PROPOSED CONSTRUCTION OF THE  
NEWLY LOCATED OF EASTING UNDERGROUND UTILITIES  
BY VIGILANT EXCAVATION OR OTHER POTENTIAL HAZARDS.

1. ALL WITERS MAILED MUST BE OTHERWISE NOTED SHALL HAVE A MINIMUM COVER OF AT LEAST 2000 FEET. THE COVER SHALL BE MAINTAINED AT ALL TIMES. THE COVER SHALL BE MAINTAINED AT ALL TIMES. THE COVER SHALL BE MAINTAINED AT ALL TIMES.
2. WHEN THE COVER IS MAINTAINED, THE COVER SHALL BE MAINTAINED AT ALL TIMES. THE COVER SHALL BE MAINTAINED AT ALL TIMES. THE COVER SHALL BE MAINTAINED AT ALL TIMES.
3. WHEN THE COVER IS MAINTAINED, THE COVER SHALL BE MAINTAINED AT ALL TIMES. THE COVER SHALL BE MAINTAINED AT ALL TIMES. THE COVER SHALL BE MAINTAINED AT ALL TIMES.
4. WHEN THE COVER IS MAINTAINED, THE COVER SHALL BE MAINTAINED AT ALL TIMES. THE COVER SHALL BE MAINTAINED AT ALL TIMES. THE COVER SHALL BE MAINTAINED AT ALL TIMES.
5. WHEN THE COVER IS MAINTAINED, THE COVER SHALL BE MAINTAINED AT ALL TIMES. THE COVER SHALL BE MAINTAINED AT ALL TIMES. THE COVER SHALL BE MAINTAINED AT ALL TIMES.
6. WHEN THE COVER IS MAINTAINED, THE COVER SHALL BE MAINTAINED AT ALL TIMES. THE COVER SHALL BE MAINTAINED AT ALL TIMES. THE COVER SHALL BE MAINTAINED AT ALL TIMES.
7. WHEN THE COVER IS MAINTAINED, THE COVER SHALL BE MAINTAINED AT ALL TIMES. THE COVER SHALL BE MAINTAINED AT ALL TIMES. THE COVER SHALL BE MAINTAINED AT ALL TIMES.
8. WHEN THE COVER IS MAINTAINED, THE COVER SHALL BE MAINTAINED AT ALL TIMES. THE COVER SHALL BE MAINTAINED AT ALL TIMES. THE COVER SHALL BE MAINTAINED AT ALL TIMES.
9. WHEN THE COVER IS MAINTAINED, THE COVER SHALL BE MAINTAINED AT ALL TIMES. THE COVER SHALL BE MAINTAINED AT ALL TIMES. THE COVER SHALL BE MAINTAINED AT ALL TIMES.
10. WHEN THE COVER IS MAINTAINED, THE COVER SHALL BE MAINTAINED AT ALL TIMES. THE COVER SHALL BE MAINTAINED AT ALL TIMES. THE COVER SHALL BE MAINTAINED AT ALL TIMES.



TABLE OF DIMENSIONS FOR WIDTH OF TRENCH AND PAVEMENT REPLACEMENT11[illegible][illegible]